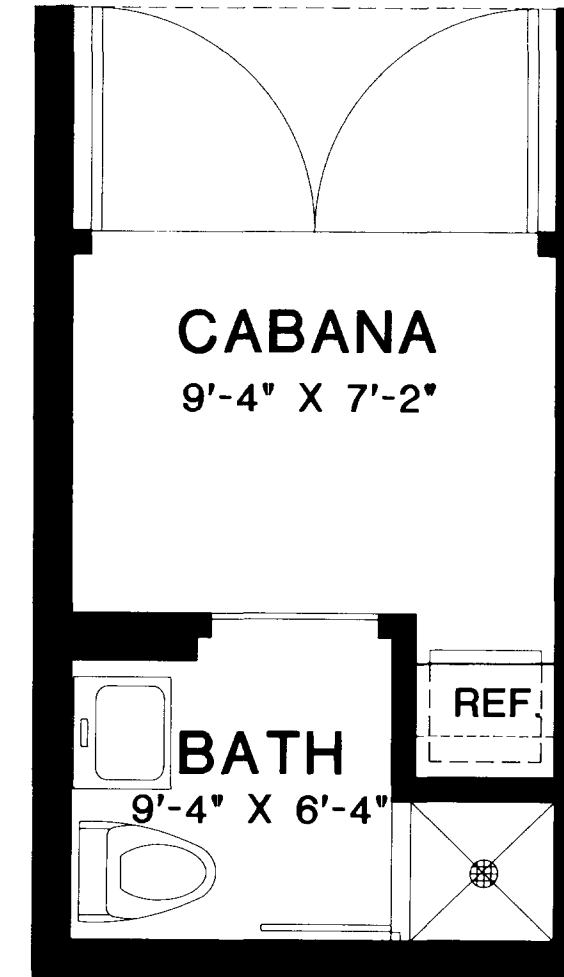
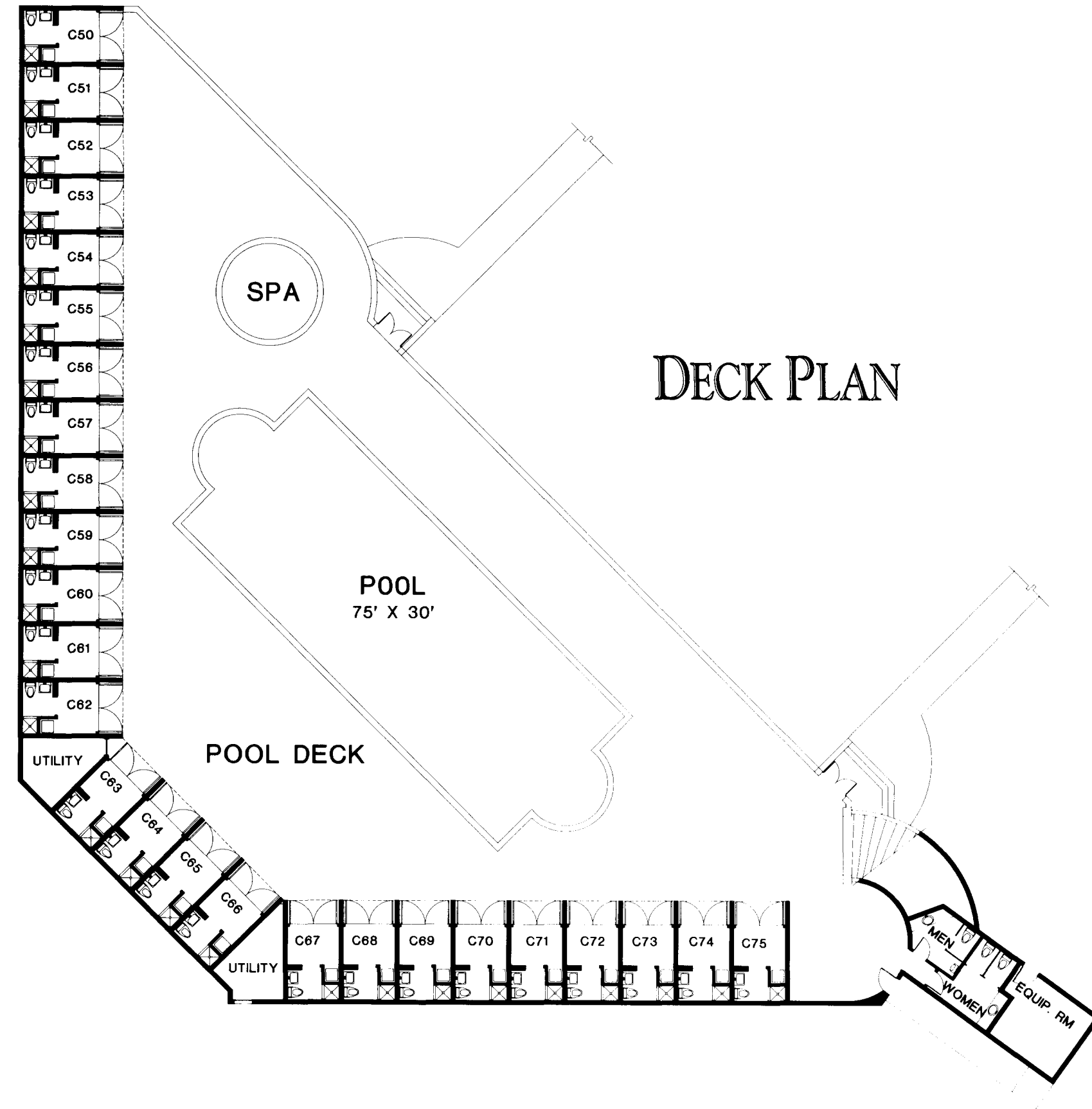


LOBBY FLOOR PLAN

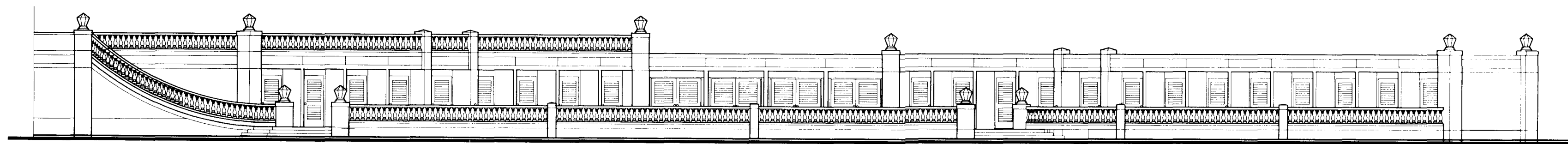
TYPICAL (2-20) FLOOR PLAN



AIR CONDITIONED SQUARE FOOTAGE AND DIMENSIONS ARE COMPILED IN THE FOLLOWING MANNER: FROM OUTSIDE OF THE OUTSIDE WALL TO HALF THE INTERIOR COMMON WALL, INCLUDING THE UTILITY CLOSET CONTAINING THE AIR CONDITIONER AND WATER HEATER AND THE A/C STORAGE ROOM ON EACH TYPICAL FLOOR. THE DIMENSIONS, SIZES, CONFIGURATIONS AND OTHER INFORMATION CONTAINED ON THIS DRAWING ARE SUBJECT TO CHANGE WITHOUT NOTICE AND ARE MEANT TO BE ILLUSTRATIVE ONLY, AND ARE SUBJECT TO ACTUAL CONSTRUCTION VARIATIONS AS A RESULT OF FIELD CONDITIONS AND CHANGES. ALL DIMENSIONS SHOWN ARE TAKEN FROM THE GREATEST POINTS OF A GIVEN ROOM AND IN THE CASE OF TERRACES, THE LENGTH IS CALCULATED BY ADDING THE COMBINED LENGTH DOWN THE CENTERLINE OF THE TERRACE.



TYPICAL CABANA PLAN



AIR CONDITIONED SQUARE FOOTAGE AND DIMENSIONS ARE COMPILED IN THE FOLLOWING MANNER: FROM OUTSIDE OF THE OUTSIDE WALL TO HALF THE INTERIOR COMMON WALL, INCLUDING THE UTILITY CLOSET CONTAINING THE AIR CONDITIONER AND WATER HEATER AND THE A/C STORAGE ROOM ON EACH TYPICAL FLOOR. THE DIMENSIONS, SIZES, CONFIGURATIONS AND OTHER INFORMATION CONTAINED ON THIS DRAWING ARE SUBJECT TO CHANGE WITHOUT NOTICE AND ARE MEANT TO BE ILLUSTRATIVE ONLY, AND ARE SUBJECT TO ACTUAL CONSTRUCTION VARIATIONS AS A RESULT OF FIELD CONDITIONS AND CHANGES. ALL DIMENSIONS SHOWN ARE TAKEN FROM THE GREATEST POINTS OF A GIVEN ROOM AND IN THE CASE OF TERRACES, THE LENGTH IS CALCULATED BY ADDING THE COMBINED LENGTH DOWN THE CENTERLINE OF THE TERRACE.