

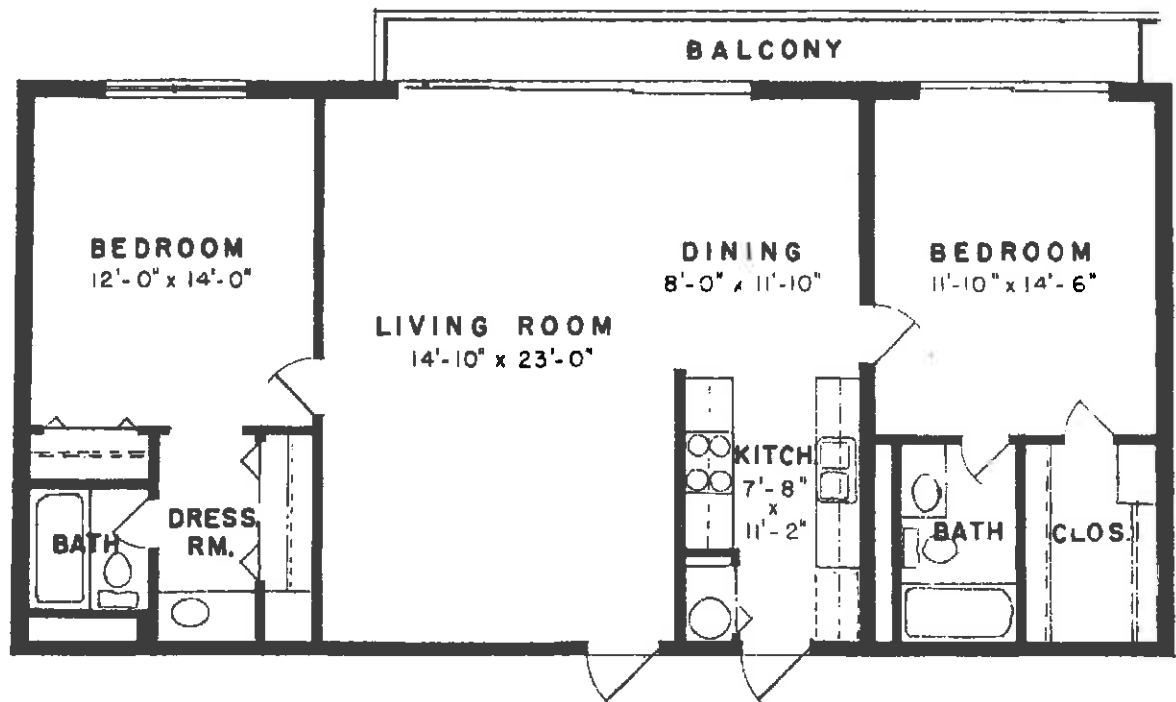
"The Tri-View" apartments are available in the following locations:

SOUTH WING

- No. 21
- No. 31
- No. 41
- No. 51
- No. 61

NORTH WING *

- No. 16
- No. 26
- No. 36
- No. 46
- No. 56
- No. 66



"The Residence" apartments are available in the following locations:

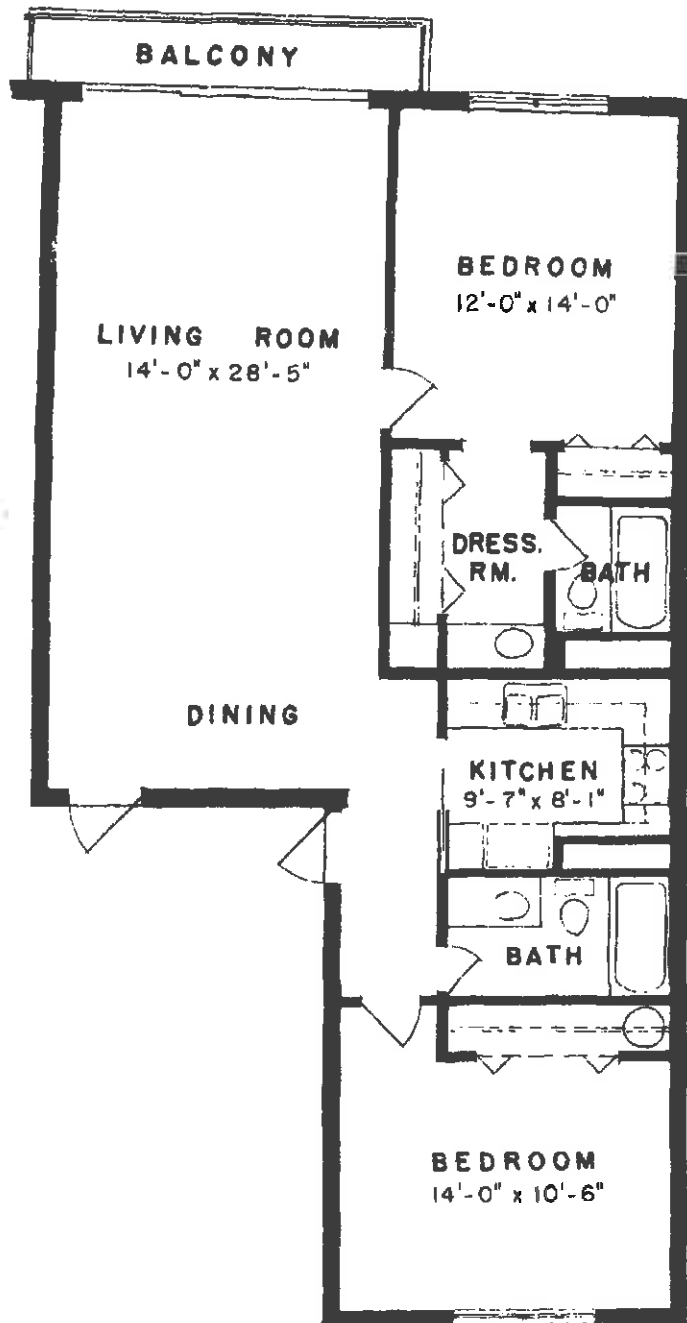
SOUTH WING

- No. 12
- No. 22
- No. 32
- No. 42
- No. 52
- No. 62

NORTH WING *

- No. 15
- No. 25
- No. 35
- No. 45
- No. 55
- No. 65

* Identical to plan above, but reversed. (Opposite hand)



"The Home Away From Home" apartments are available in the following locations:

SOUTH WING

- No. 23
- No. 33
- No. 43
- No. 53
- No. 63

NORTH WING *

- No. 24
- No. 34
- No. 44
- No. 54
- No. 64

* Identical to plan above, but reversed. (Opposite hand)