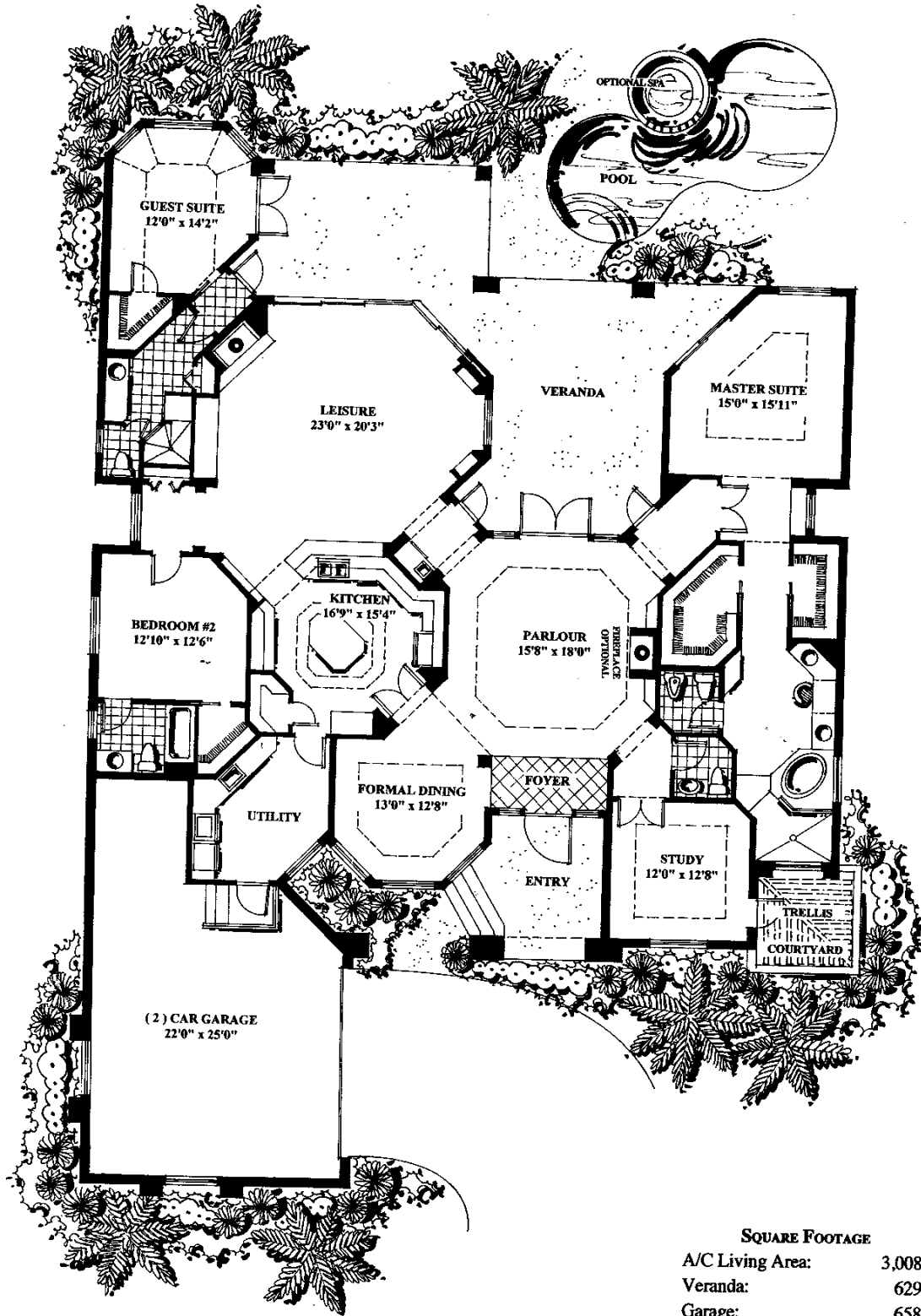


GRAND PARLOUR HOME



The Mews
AT GREY OAKS



SQUARE FOOTAGE	
A/C Living Area:	3,008'
Veranda:	629'
Garage:	658'
Entry:	188'
TOTAL:	4,483'

Dimensions approximate. Information herein believed to be accurate but not warranted.

Developed by Country Homes of Collier County, Inc.
Marketed exclusively by Grey Oaks Realty, Inc.