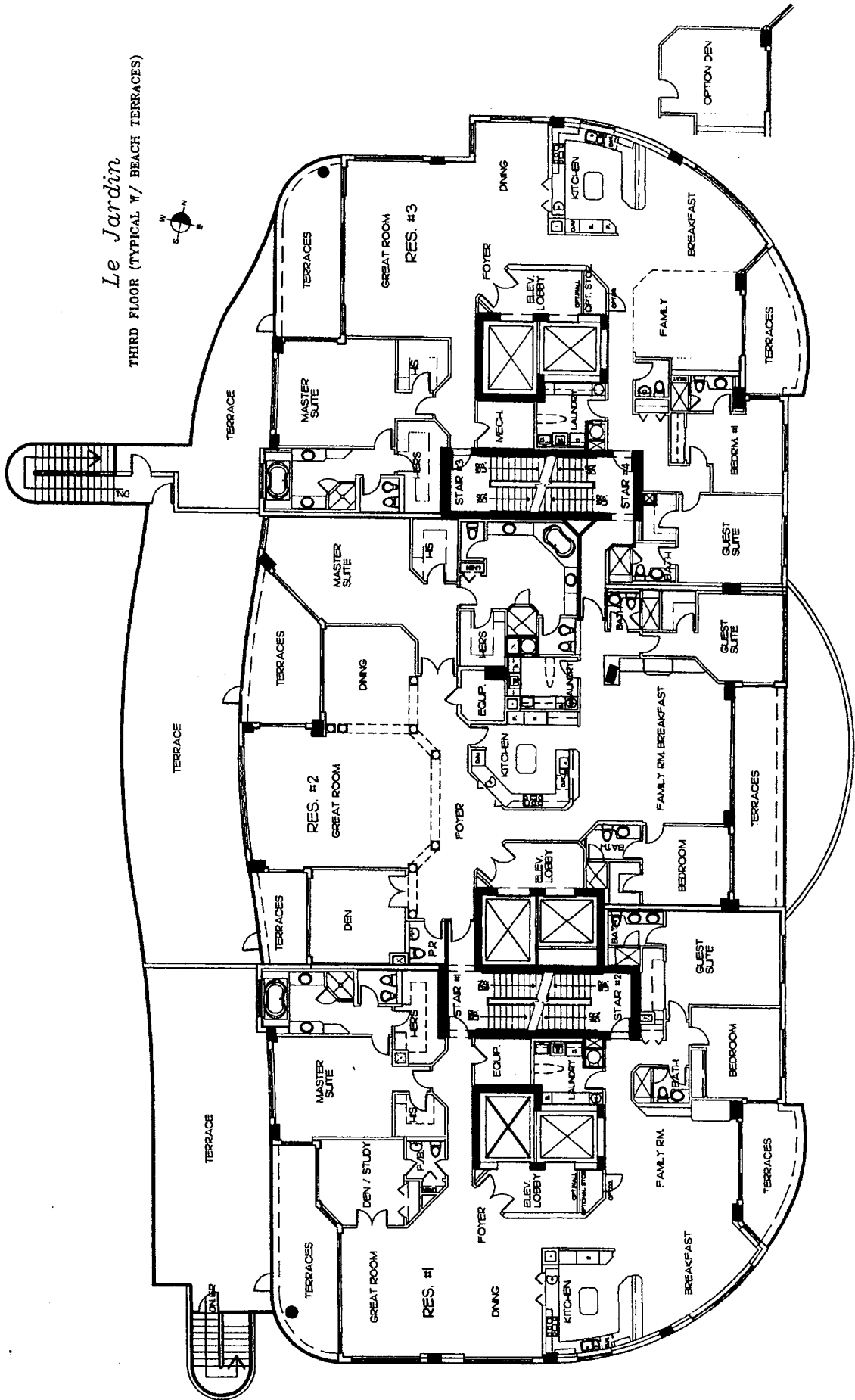
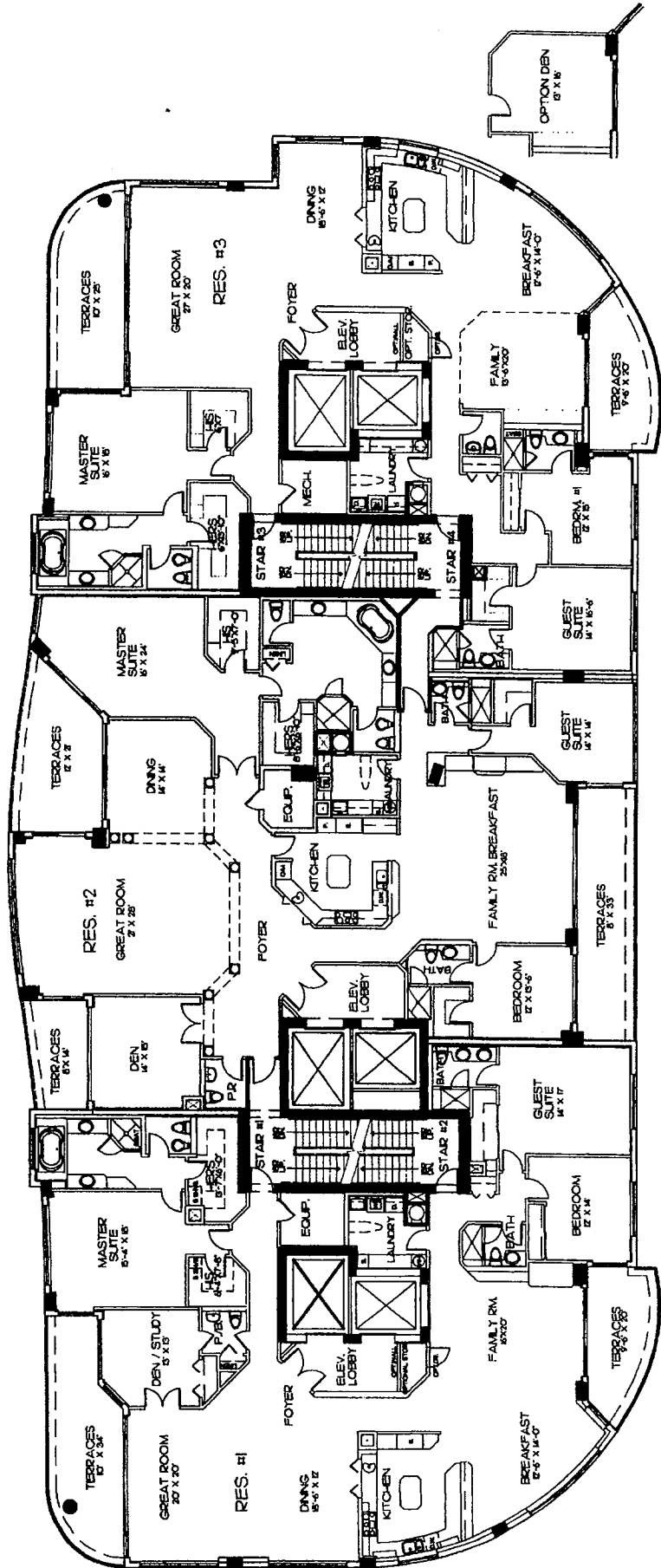
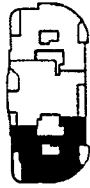
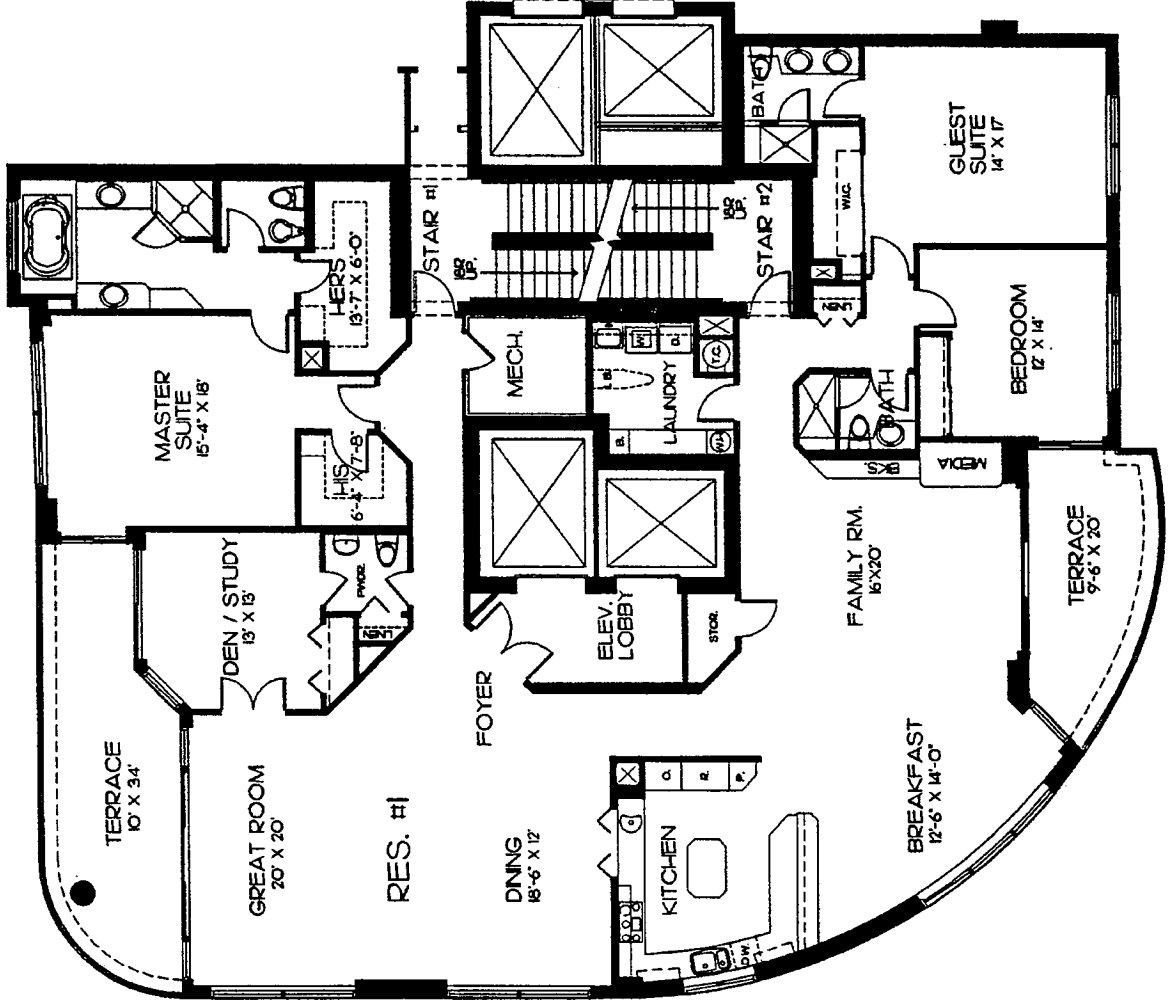


Le Jardin
THIRD FLOOR (TYPICAL W/ BEACH TERRACES)



Le Jardin
4TH THRU 19TH FLOORS





KEY PLAN

LE JARDIN

RESIDENCE - ONE

LIVING AREA 3680 SQ. FT.
 TERRACES 466 SQ. FT.
 TOTAL 4346 SQ. FT.

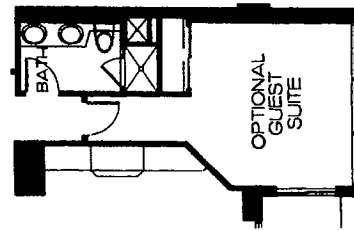
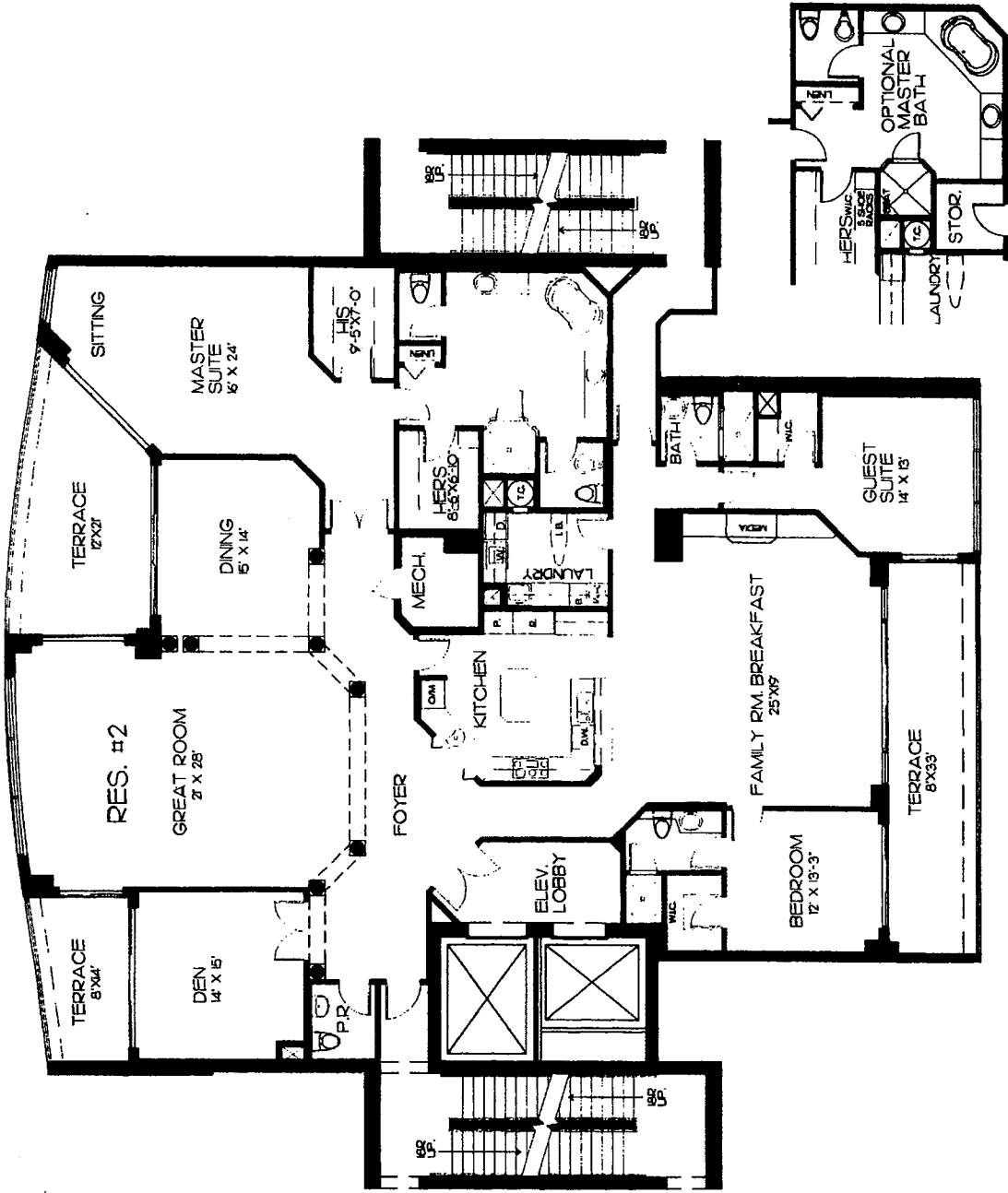
NOTE: ALL DIMENSIONS ARE APPROXIMATE AND SUBJECT TO CHANGE. DATE: 10/23/97



KEY PLAN

LE JARDIN
RESIDENCE - TWO

LIVING AREA 4174 SQ. FT.
TERRACES 614 SQ. FT.
TOTAL 4788 SQ. FT.



NOTE: ALL DIMENSIONS ARE APPROXIMATE AND SUBJECT TO CHANGE. DATE: 06/10/96

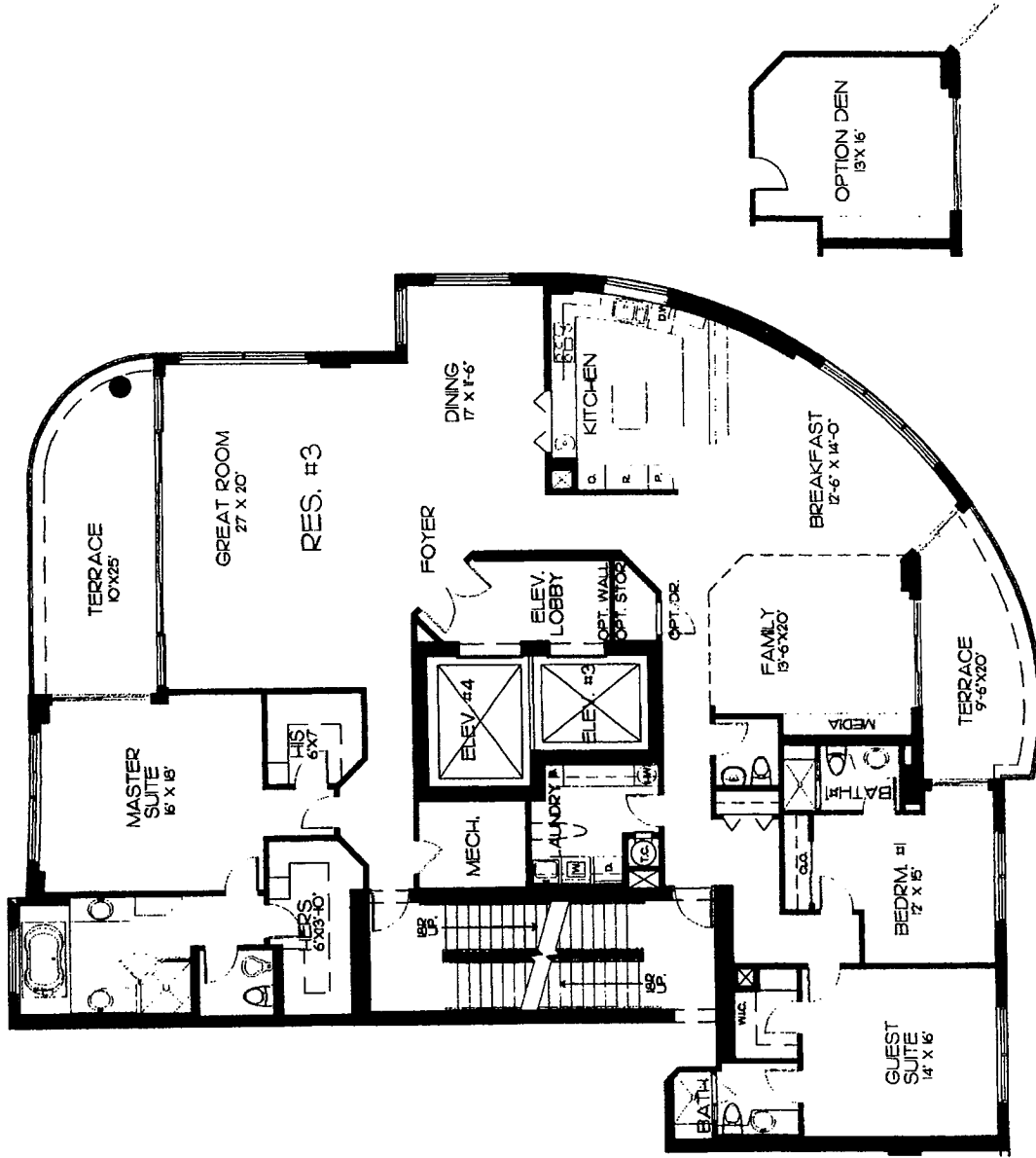


KEY PLAN

LE JARDIN

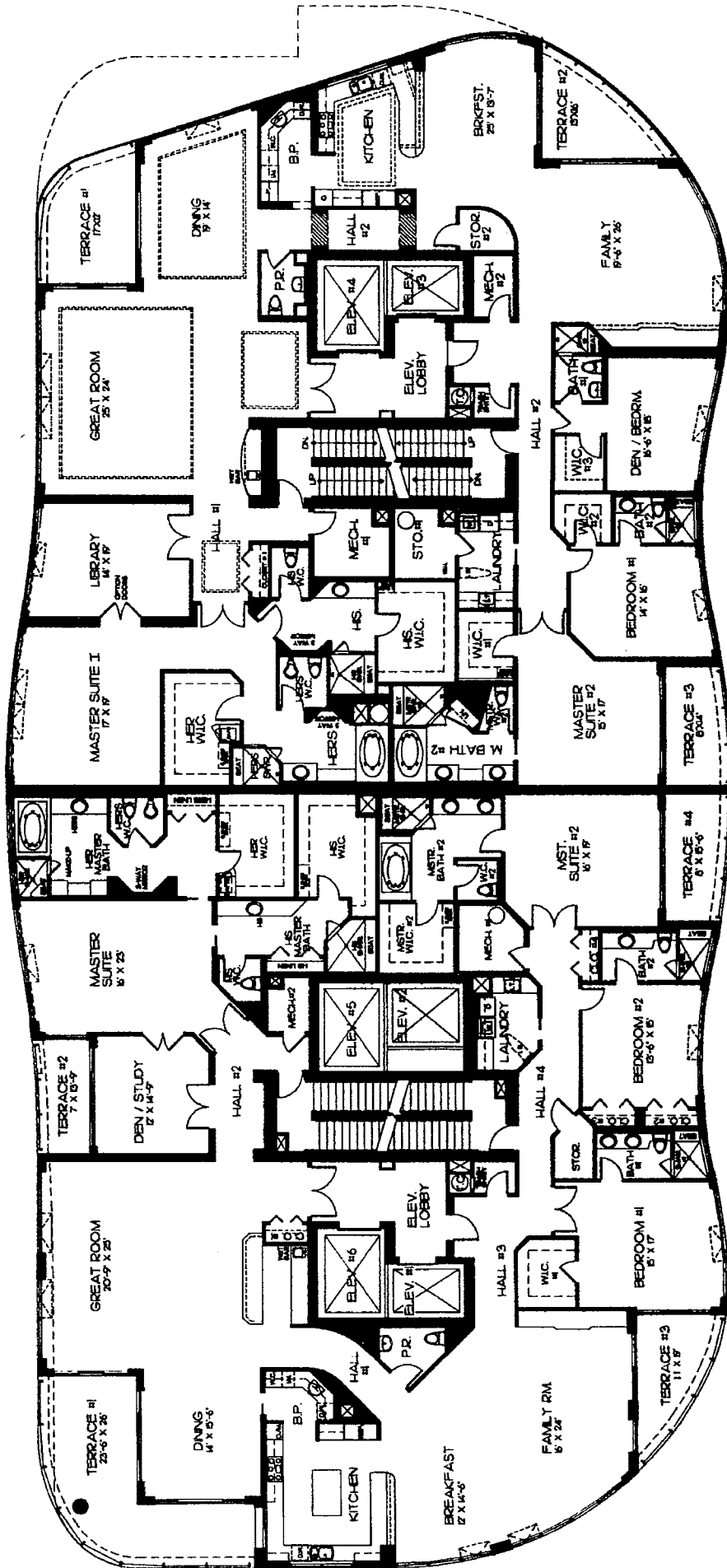
RESIDENCE - THREE

LIVING AREA 3869 SQ. FT.
 TERRACES 444 SQ. FT.
 TOTAL 4313 SQ. FT.



NOTE: ALL DIMENSIONS ARE APPROXIMATE AND SUBJECT TO CHANGE. DATE: 04/5/96

Le Jardin
 NORTH AND SOUTH PENTHOUSES
 20TH FLOOR



Le Jardin
 NORTH AND SOUTH PENTHOUSES
 21ST FLOOR

