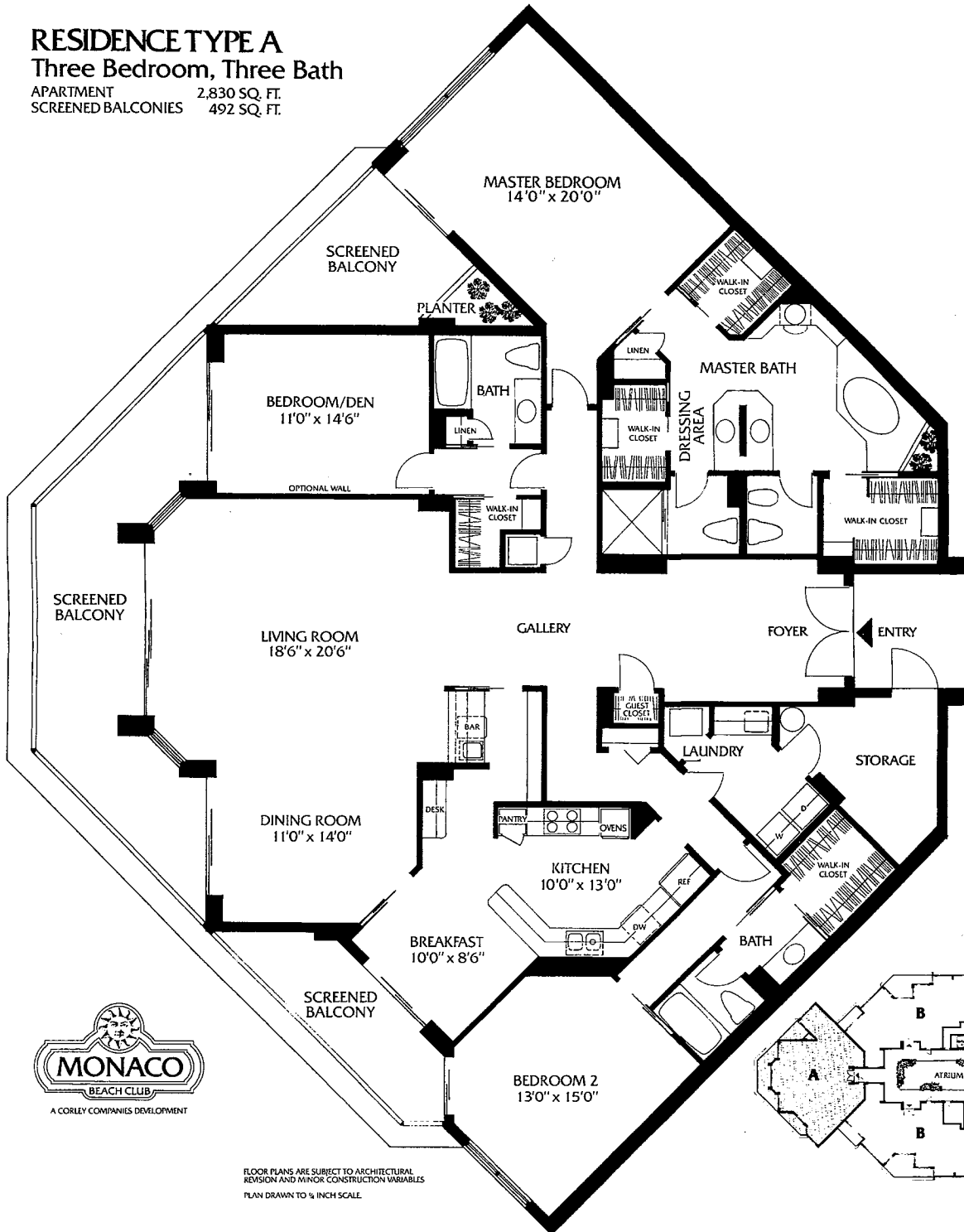


RESIDENCE TYPE A

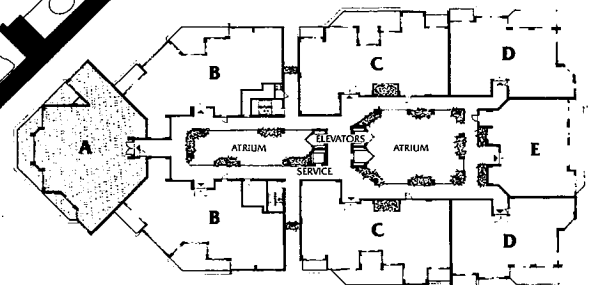
Three Bedroom, Three Bath

APARTMENT 2,830 SQ. FT.
 SCREENED BALCONIES 492 SQ. FT.



A CORLEY COMPANIES DEVELOPMENT

FLOOR PLANS ARE SUBJECT TO ARCHITECTURAL
 REVISION AND MINOR CONSTRUCTION VARIABLES
 PLAN DRAWN TO 1/8 INCH SCALE

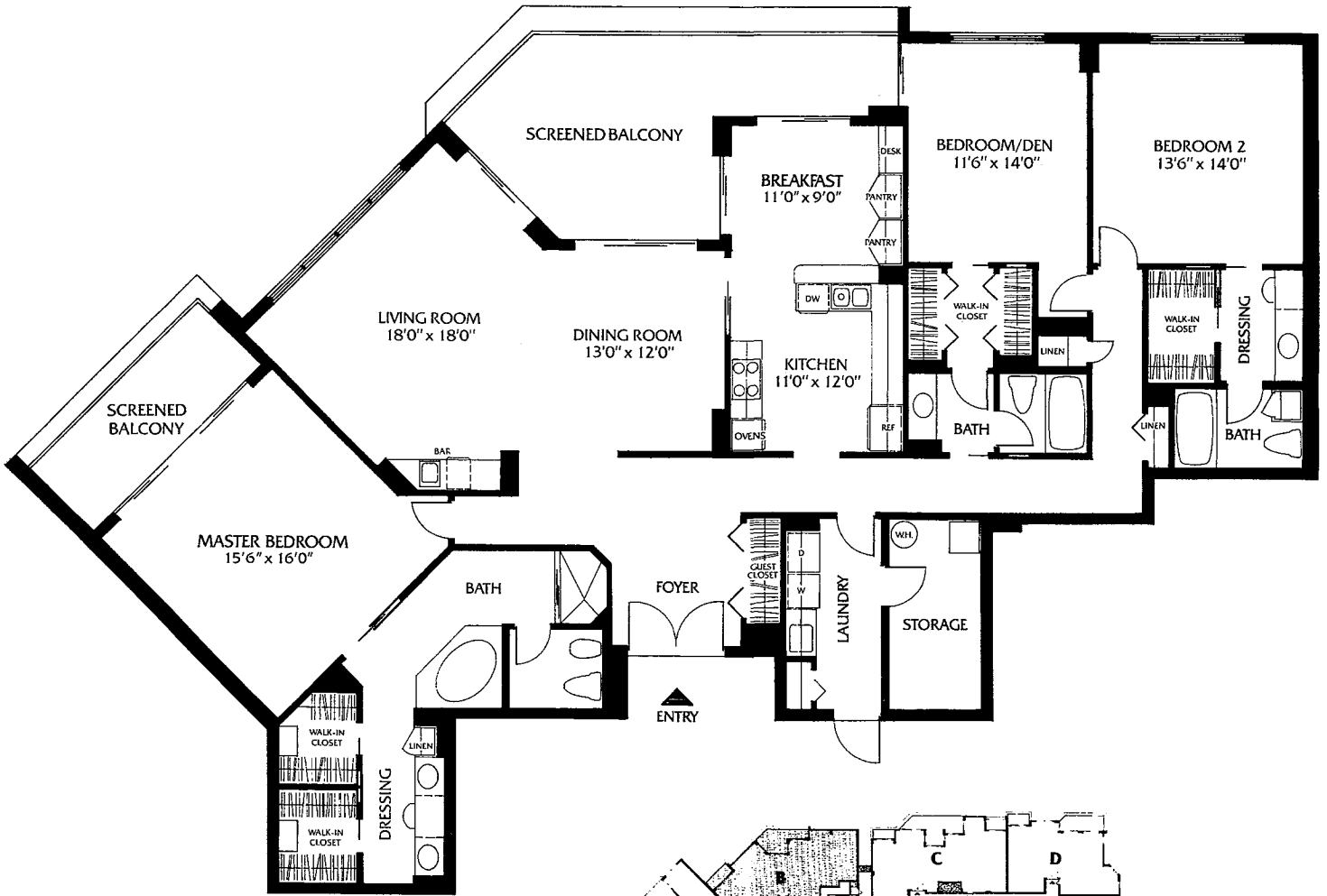


TYPICAL FLOOR PLAN

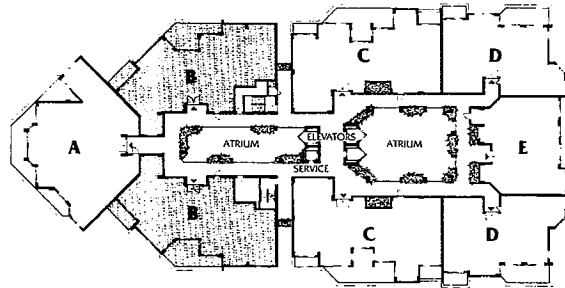
RESIDENCE TYPE B

Three Bedroom, Three Bath

APARTMENT 2,511 SQ. FT.
 SCREENED BALCONIES 337 SQ. FT.



FLOOR PLANS ARE SUBJECT TO ARCHITECTURAL REVISION AND MINOR CONSTRUCTION VARIABLES
 PLAN DRAWN TO 3/8" INCH SCALE



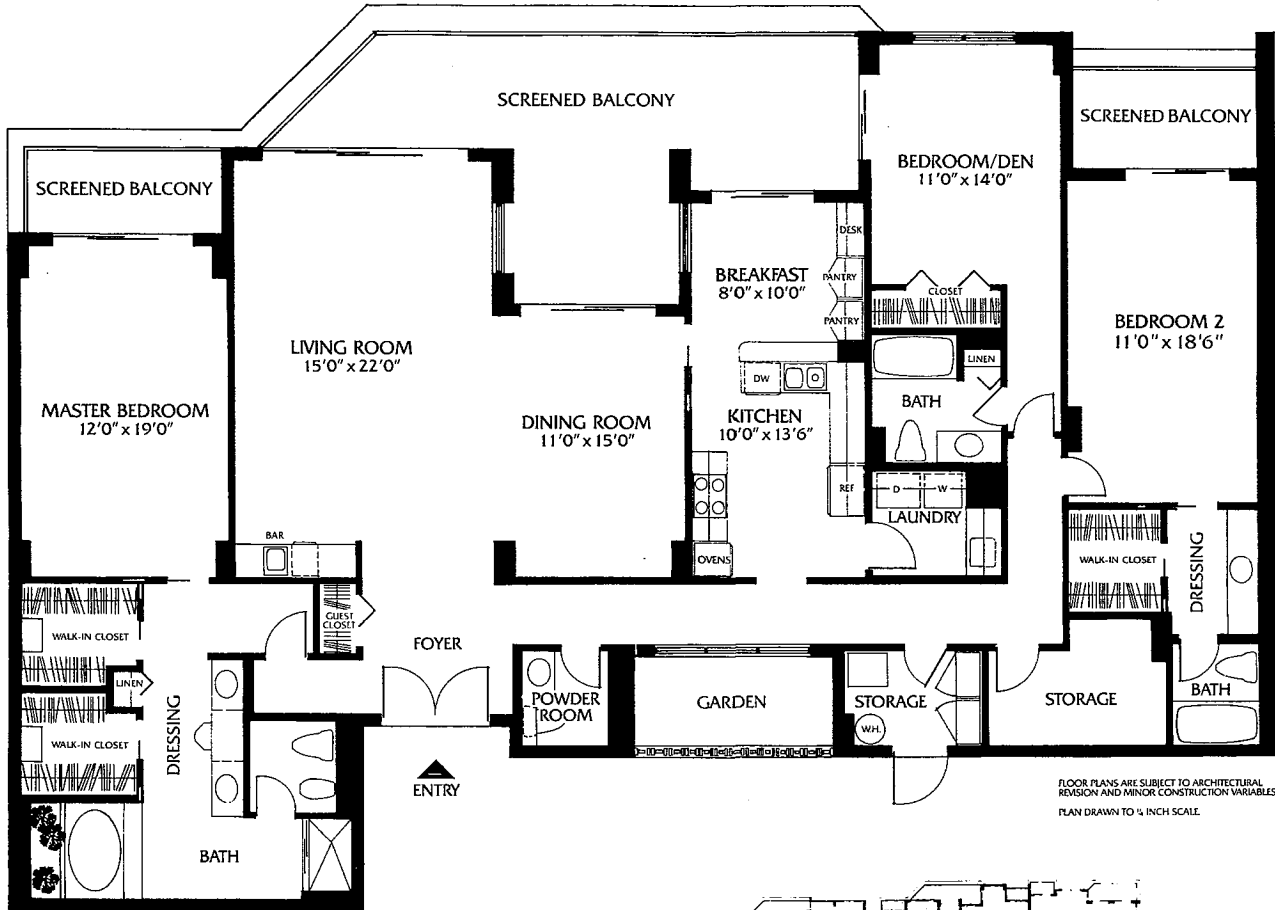
TYPICAL FLOOR PLAN



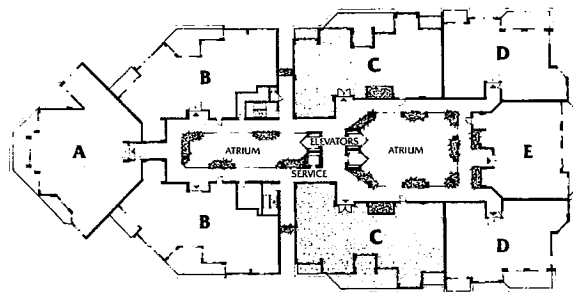
RESIDENCE TYPE C

Three Bedroom, Three & One-half Bath

APARTMENT 2,553 SQ. FT.
 SCREENED BALCONIES 462 SQ. FT.



FLOOR PLANS ARE SUBJECT TO ARCHITECTURAL REVISION AND MINOR CONSTRUCTION VARIABLES
 PLAN DRAWN TO 1/4" INCH SCALE



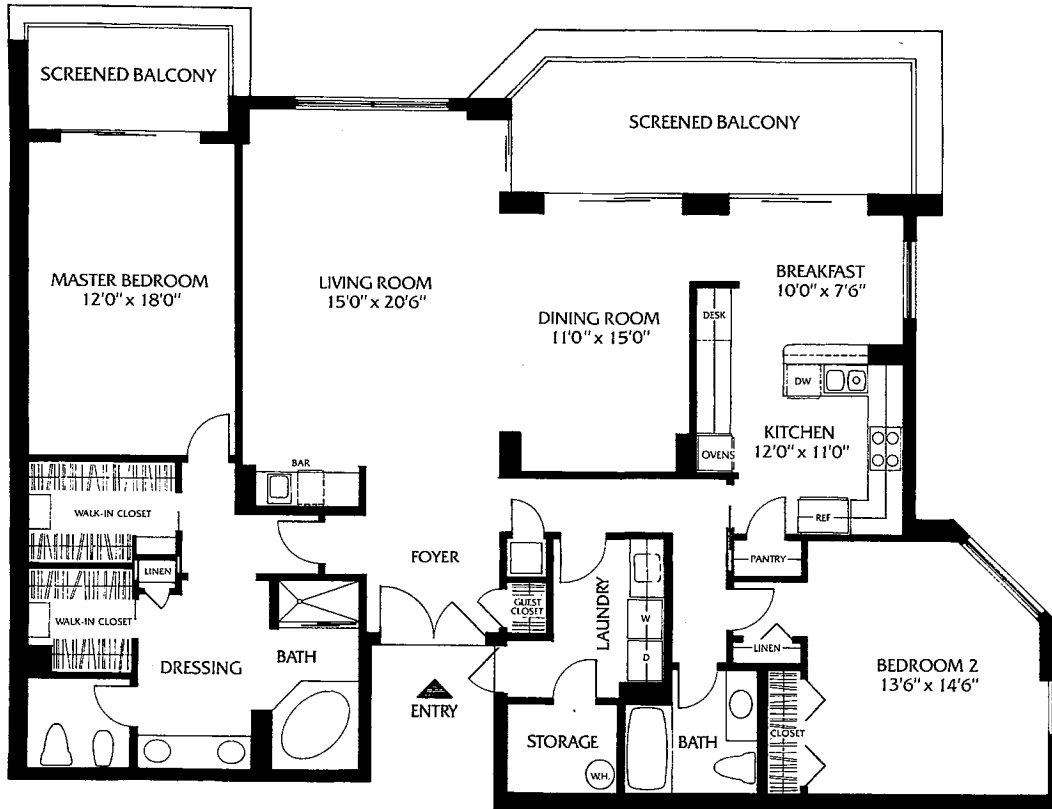
TYPICAL FLOOR PLAN



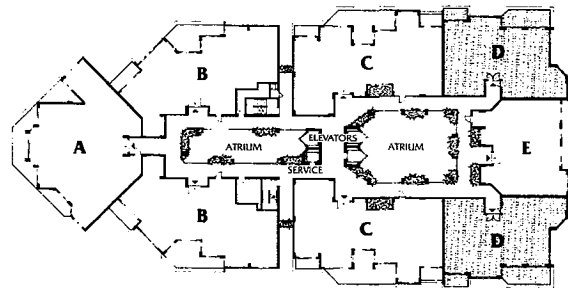
RESIDENCE TYPE D

Two Bedroom, Two Bath

APARTMENT 2,005 SQ. FT.
 SCREENED BALCONIES 260 SQ. FT.



FLOOR PLANS ARE SUBJECT TO ARCHITECTURAL
 REVISION AND MINOR CONSTRUCTION VARIABLES
 PLAN DRAWN TO 1/8" INCH SCALE



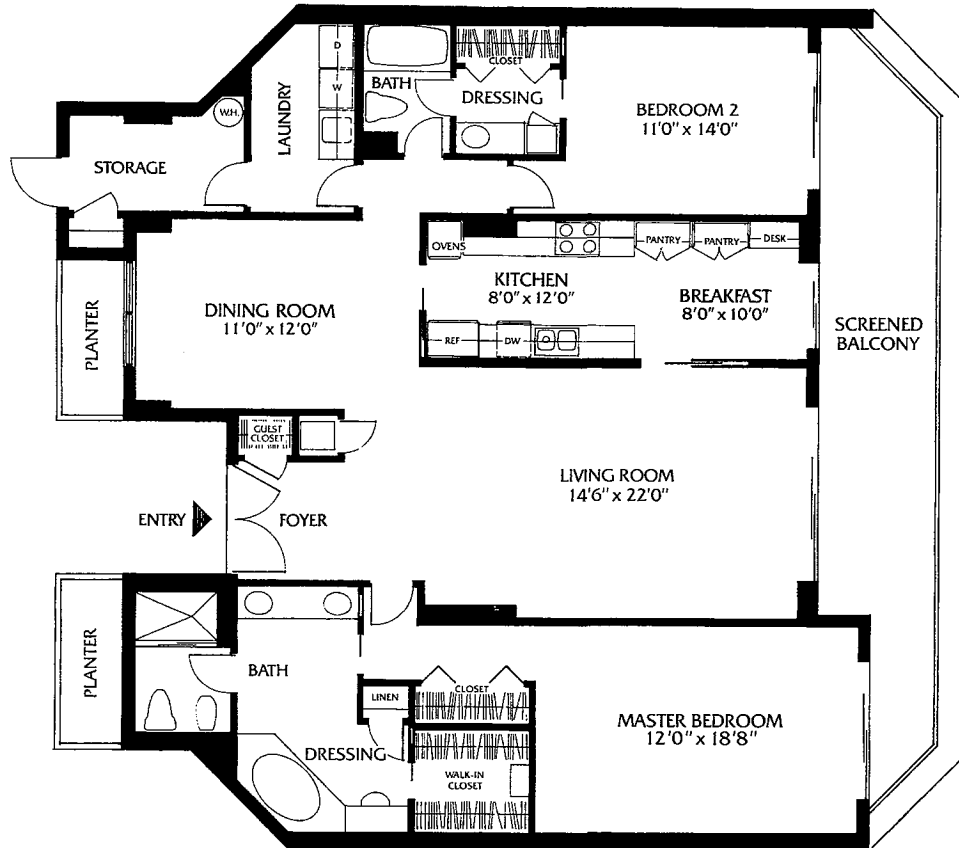
TYPICAL FLOOR PLAN



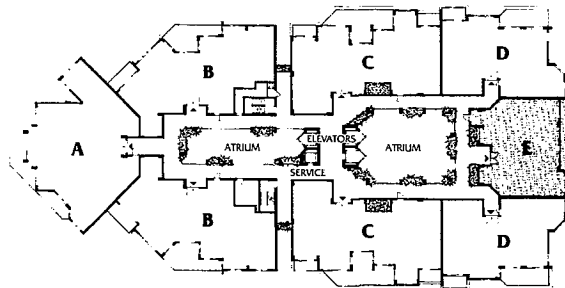
RESIDENCE TYPE E

Two Bedroom, Two Bath

APARTMENT 1,850 SQ. FT.
 SCREENED BALCONY 272 SQ. FT.



FLOOR PLANS ARE SUBJECT TO ARCHITECTURAL REVISION AND MINOR CONSTRUCTION VARIABLES
 PLAN DRAWN TO 1/4" INCH SCALE.



TYPICAL FLOOR PLAN

