

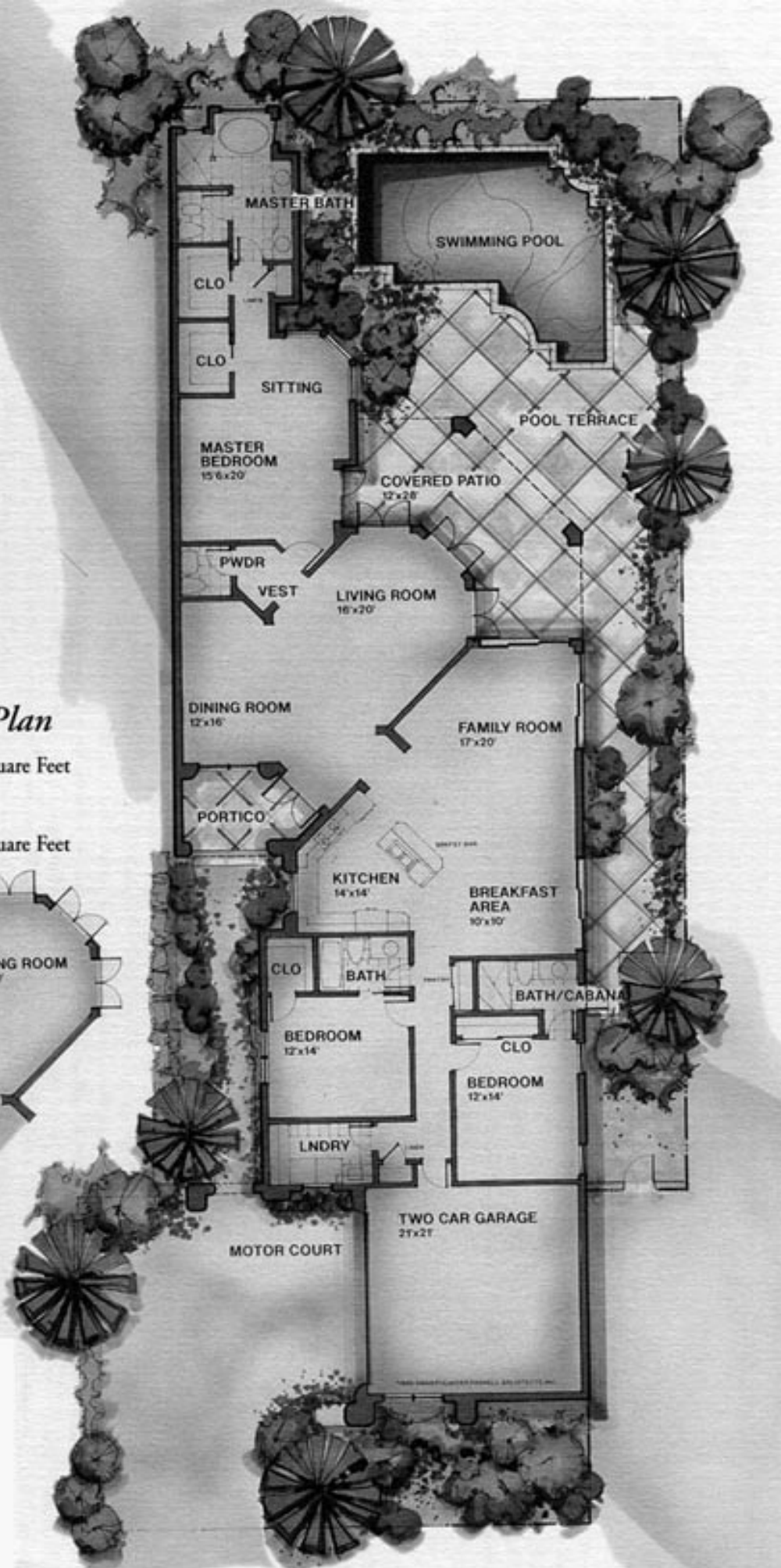
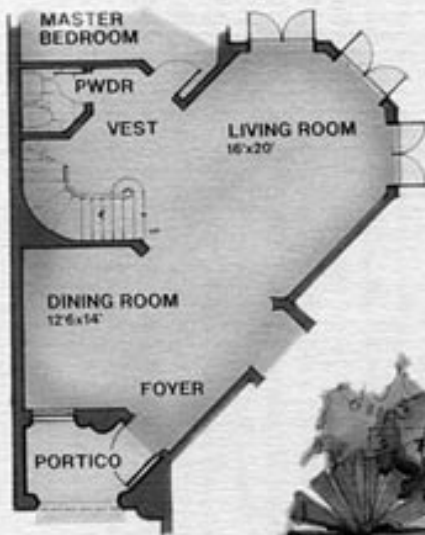


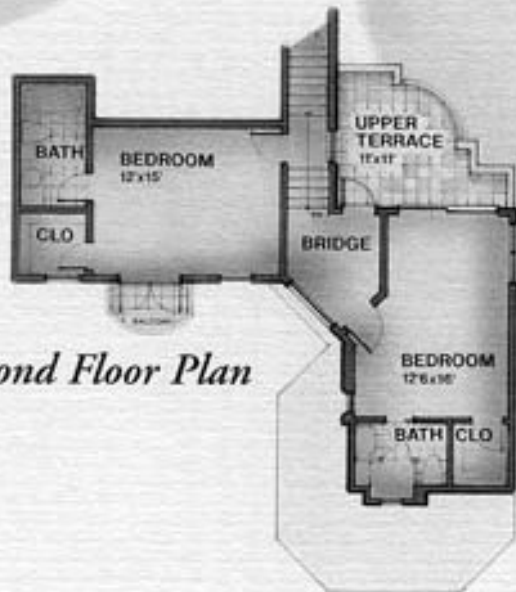
Optional Second Floor Plan

Additional Living Area 472 Square Feet

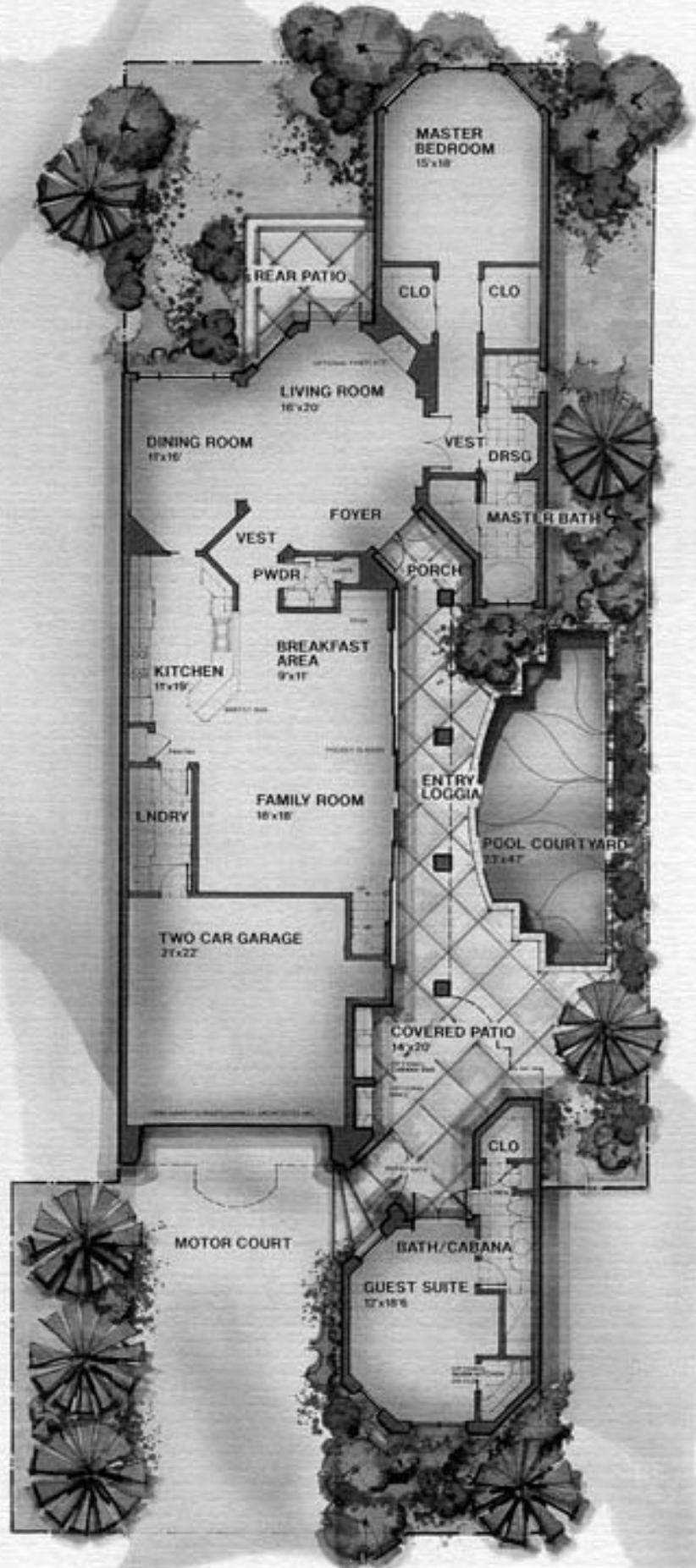
Total Living Area with Second Floor 3,135 Square Feet

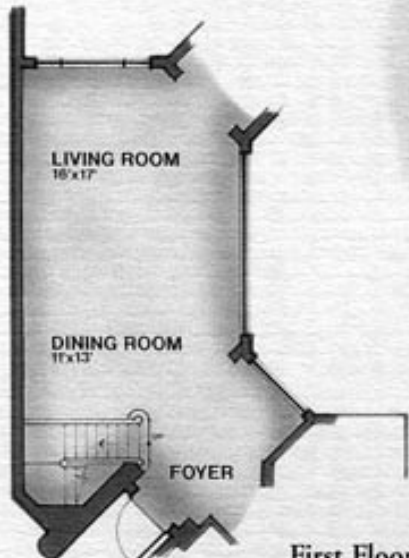
First Floor Plan with Stair Included



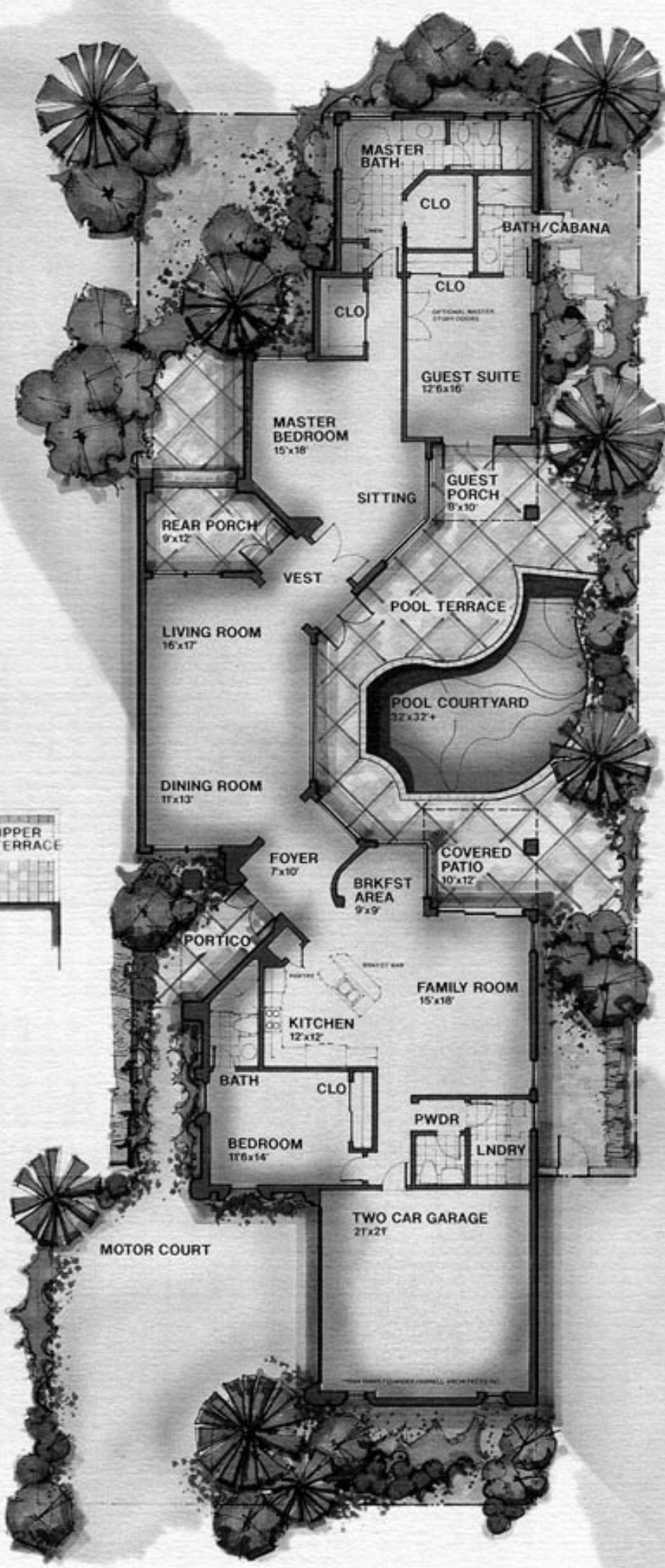
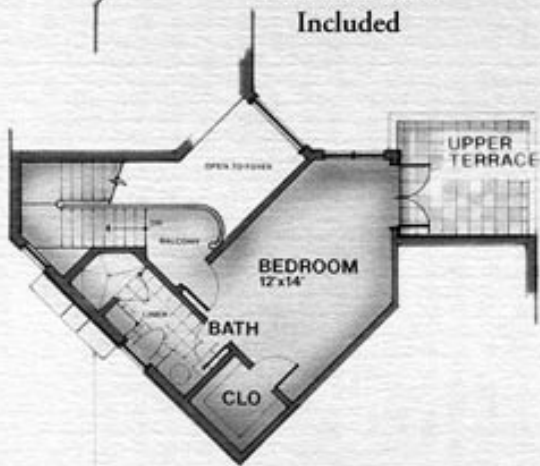


Second Floor Plan

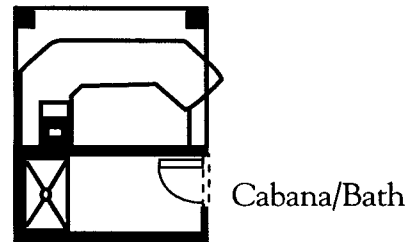
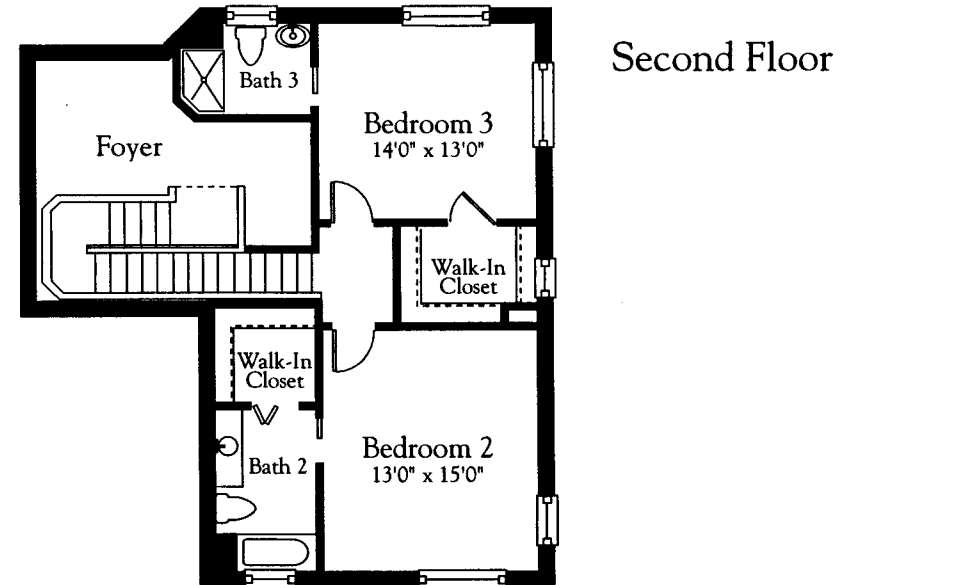
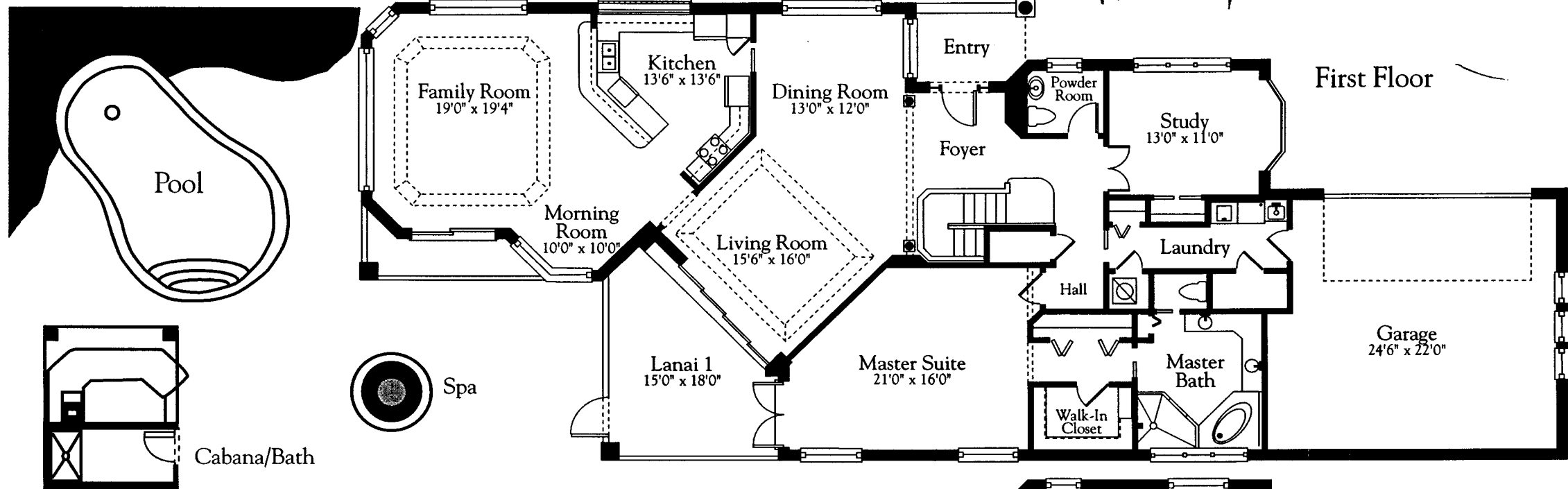




First Floor
Plan with Stair
Included



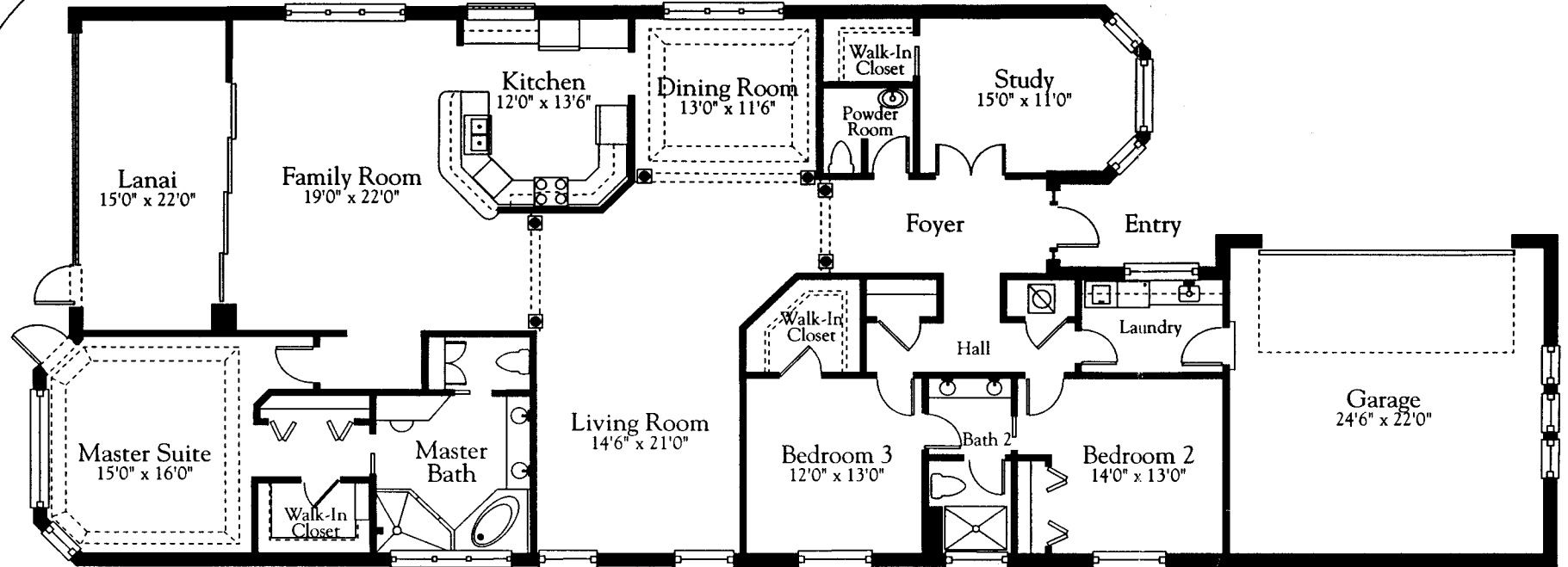
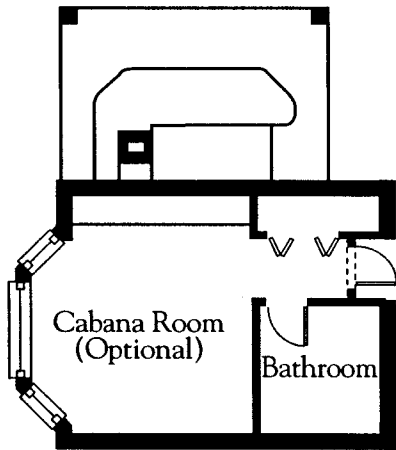
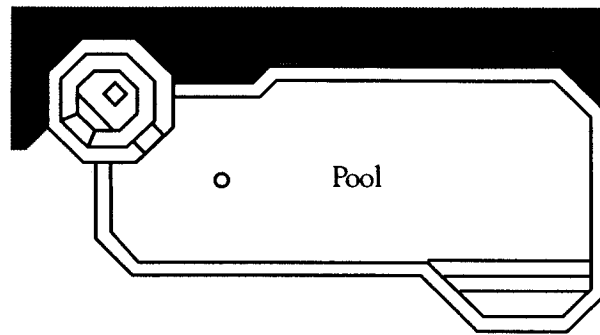
Portofino at Pelican Marsh



Portofino Floor Plan "A"

| | |
|--------------------------|--------------------------|
| First Floor Int. | 2,291 Square Feet |
| Second Floor Int. | 694 Square Feet |
| Total Living Area | 2,985 Square Feet |
| Lanai 1 | 222 Square Feet |
| Lanai 2 | 107 Square Feet |
| Garage | 576 Square Feet |
| Total Area | 3,890 Square Feet |

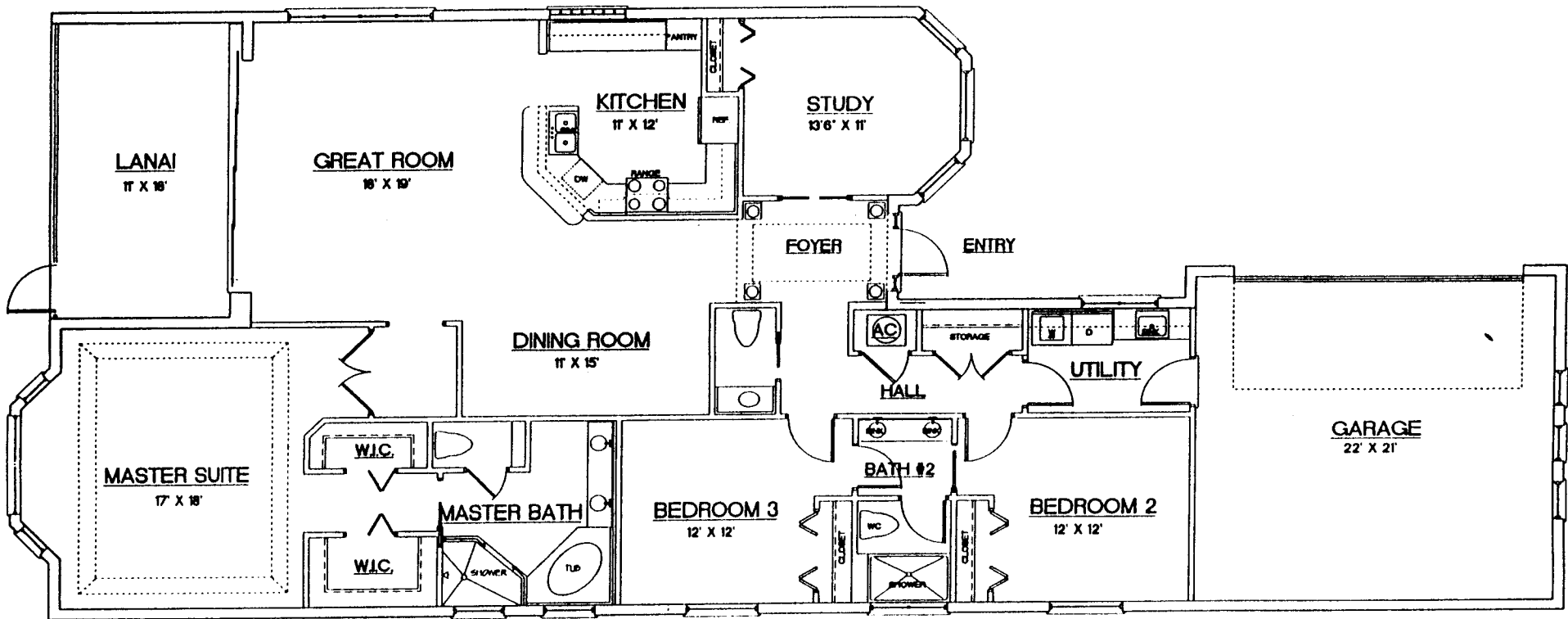
7 at Pelican marsh



Portofino Floor Plan "B"

| | |
|-------------------|--------------------------|
| Interior | 2,826 Square Feet |
| Lanai 1 | 242 Square Feet |
| Garage | 534 Square Feet |
| Total Area | 3,602 Square Feet |

All dimensions, features and specifications are approximate and subject to change without notice.



PORTOFINO - MODEL "C"

| | |
|---------------|-------------|
| Living Area: | 2265 |
| Lanai | 225 |
| Garage: | 510 |
| Total: | 3000 |

at
Pelican
Marsh

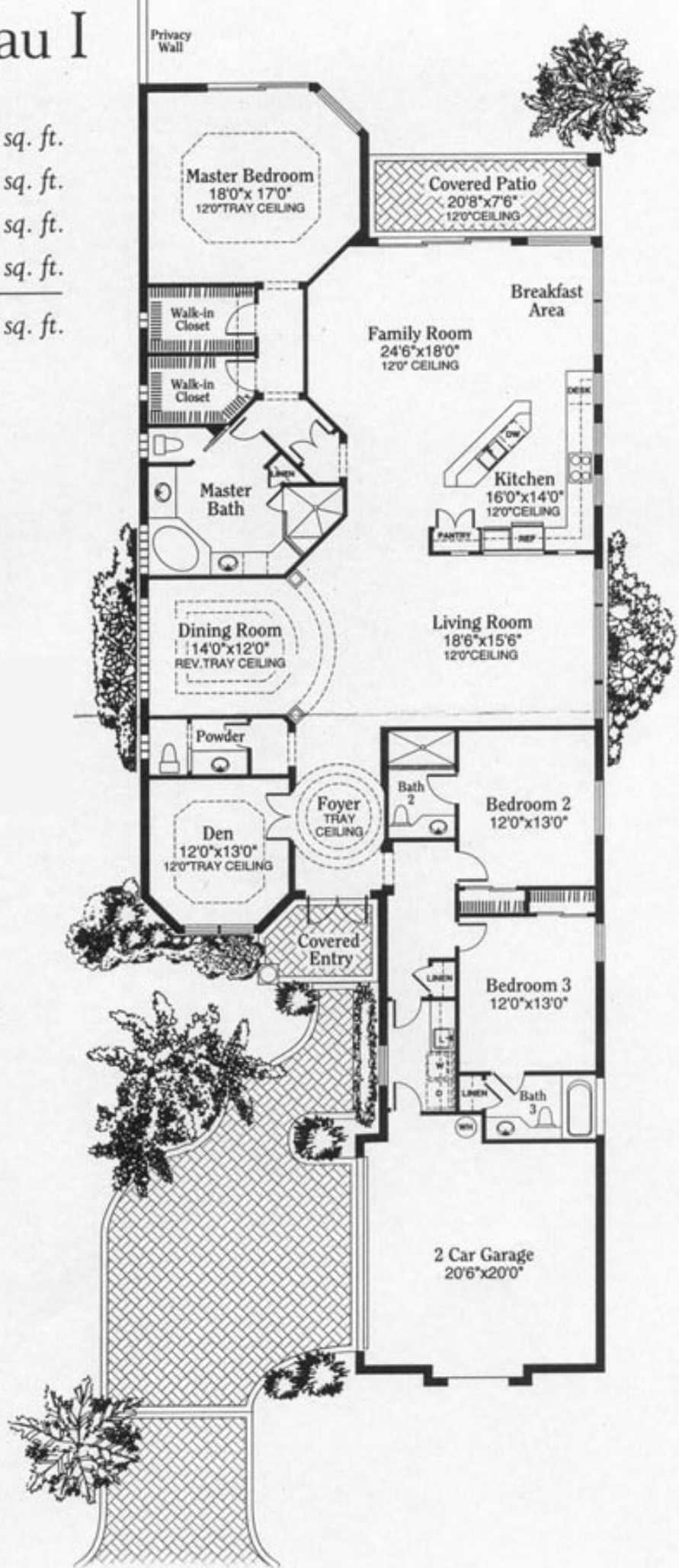
ALL DIMENSIONS ARE APPROXIMATE.

THE DEVELOPER RESERVES THE RIGHT TO CHANGE AND ALTER ALL MATERIALS, SPECIFICATIONS, FEATURES, DIMENSIONS, AND DETAILS WITHOUT NOTICE.

SEE BUILDING PLANS FOR SPECIAL ELEVATORS, STAIRS, AND WALKWAYS

The Chateau I

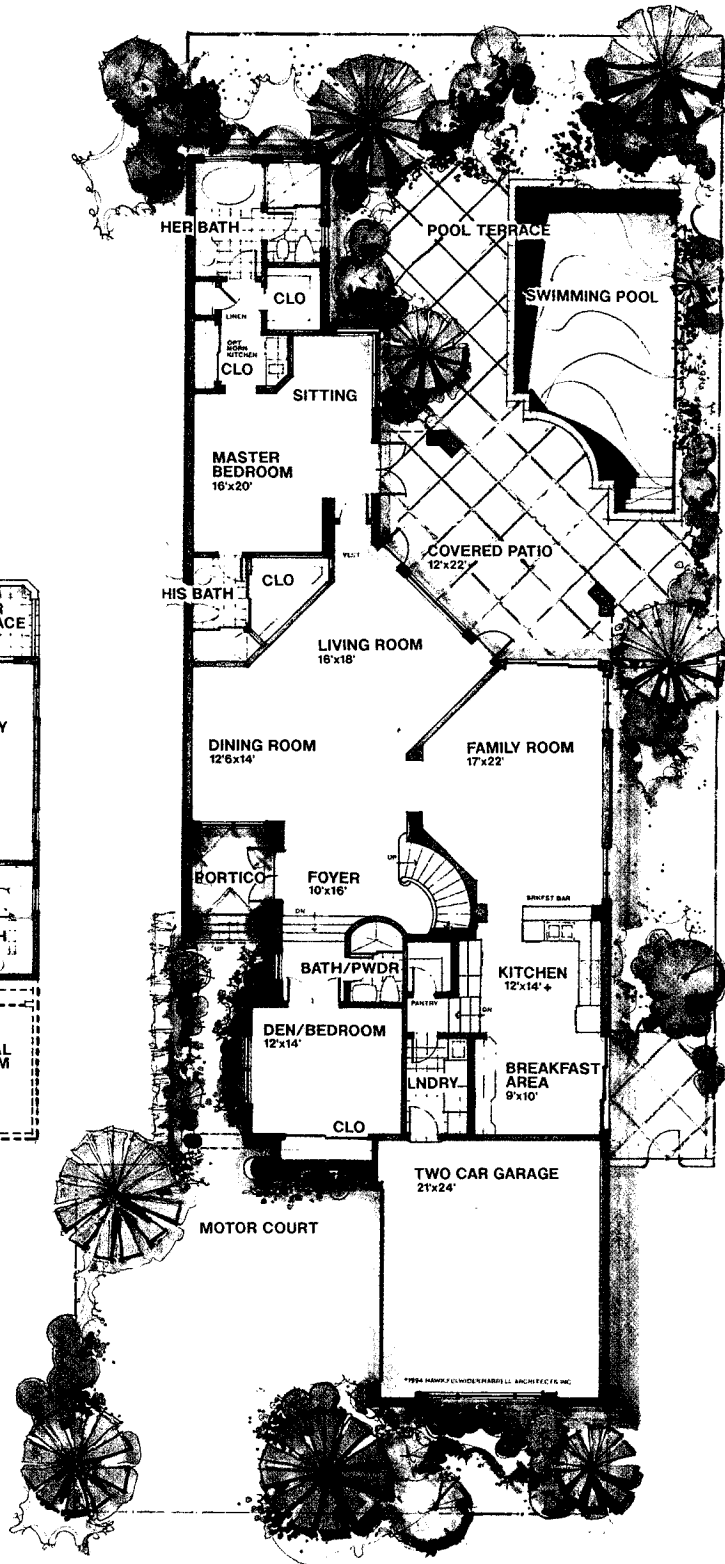
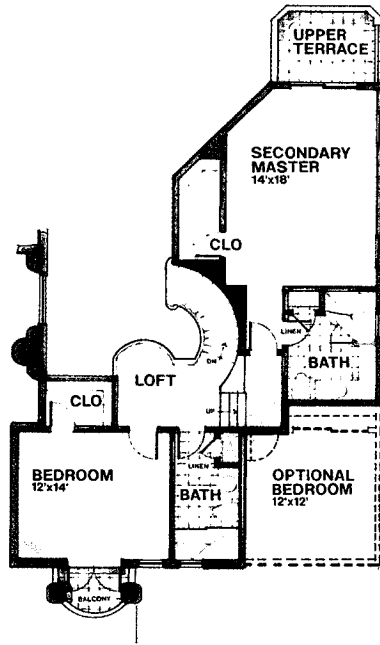
| | |
|------------------|---------------|
| Living Area A/C | 2,812 sq. ft. |
| Garage | 469 sq. ft. |
| Covered Entry | 88 sq. ft. |
| Covered Patio | 155 sq. ft. |
| <hr/> | |
| Total Under Roof | 3,524 sq. ft. |



Second Floor Plan

Additional Living Area
with Optional Bedroom 180 Square Feet

Total Living Area
with Optional Bedroom 3,523 Square Feet



The Verona

Air-Conditioned Living Area 3,343 Square Feet

Garage 528 Square Feet

Covered Patio & Loggia 386 Square Feet

Total Area Under Roof 4,257 Square Feet

These drawings are conceptual only and the developer reserves the right to make modifications, revisions, and changes which it deems desirable. Dimensions and square footage are approximate and may vary with actual construction.

PORTOFINO

AT PELICAN MARSH