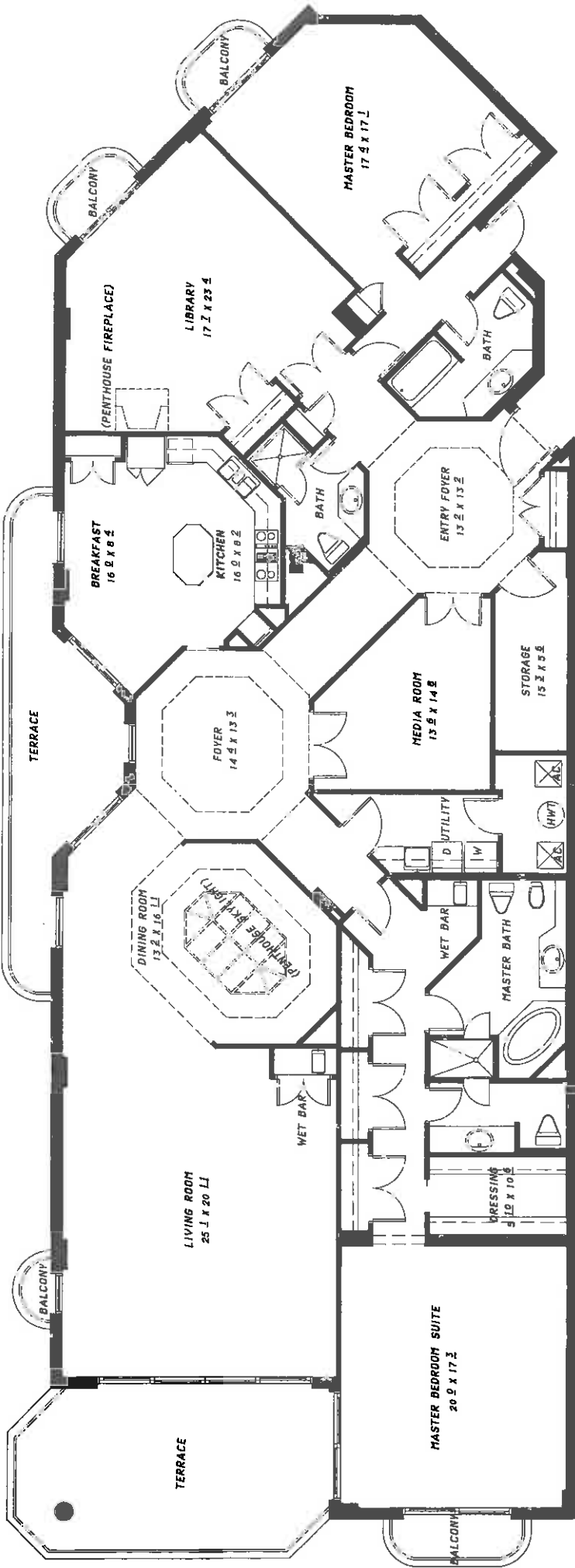


**UNIT TYPE A**

GROSS AREA 4,321 SQ. FT.  
 AIR CONDITIONED 3,785 SQ. FT.  
 TERRACES/BALCONIES 536 SQ. FT.

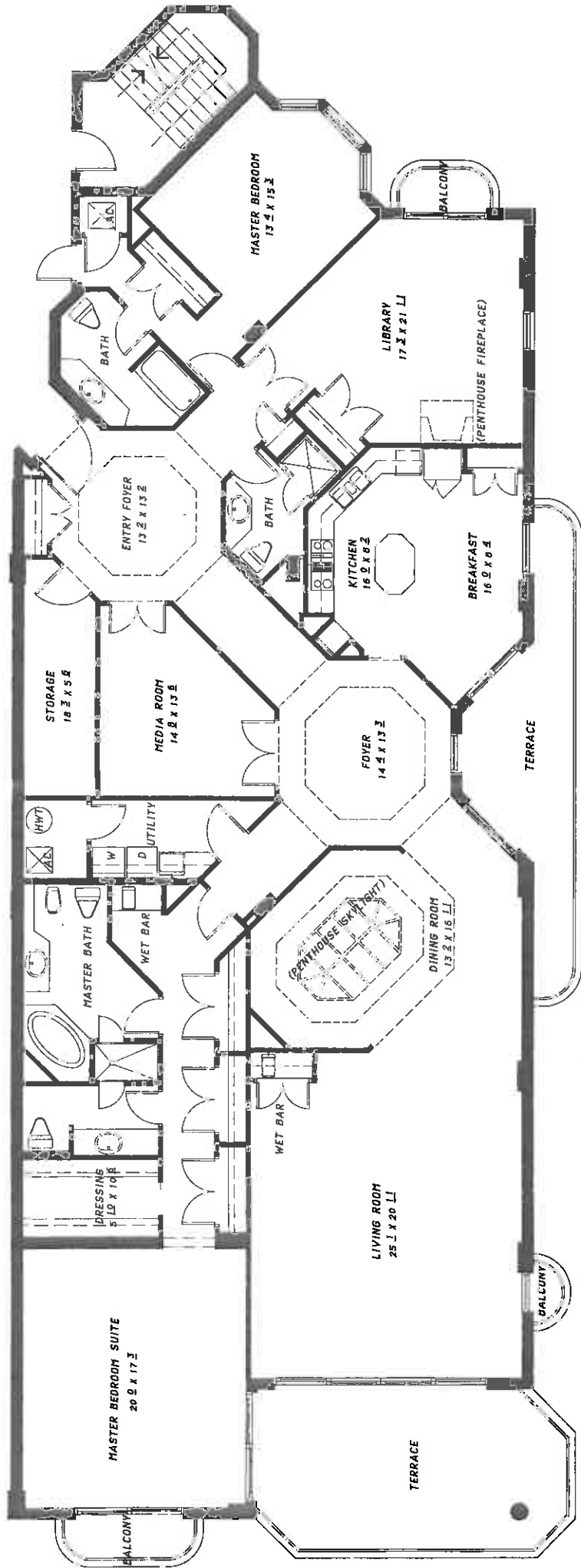
**NOTE:**  
 AT THE PENTHOUSE LEVEL (NINTH FLOOR) LOCAL ORDINANCE ALLOW US TO ADD ONE ADDITIONAL FOOT OF CEILING HEIGHT (9' - 0 1/2") TO THE ALREADY VENEROUS DIMENSIONS ON FLOORS NUMBER TWO TO EIGHT.



**UNIT TYPE B**

GROSS AREA 4,485 SQ. FT.  
 AIR CONDITIONED 3,955 SQ. FT.  
 TERRACES/BALCONIES 530 SQ. FT.

NOTE:  
 AT THE PENTHOUSE LEVEL (NINTH FLOOR) LOCAL ORDINANCE ALLOW US TO ADD ONE ADDITIONAL FOOT OF CEILING HEIGHT (9' - 6 1/2") TO THE ALREADY GENEROUS DIMENSIONS ON FLOORS NUMBER TWO TO EIGHT.



**NOTE:**  
 AT THE PENTHOUSE LEVEL (NINTH FLOOR) LOCAL ORDINANCE ALLOW US TO ADD ONE ADDITIONAL FOOT OF CEILING HEIGHT (9' - 8 1/2") TO THE ALREADY GENEROUS DIMENSIONS ON FLOORS NUMBER TWO TO EIGHT.

**UNIT TYPE C**

**GROSS AREA** 4,301 SQ. FT.  
**AIR CONDITIONED** 3,788 SQ. FT.  
**TERRACES/BALCONIES** 513 SQ. FT.