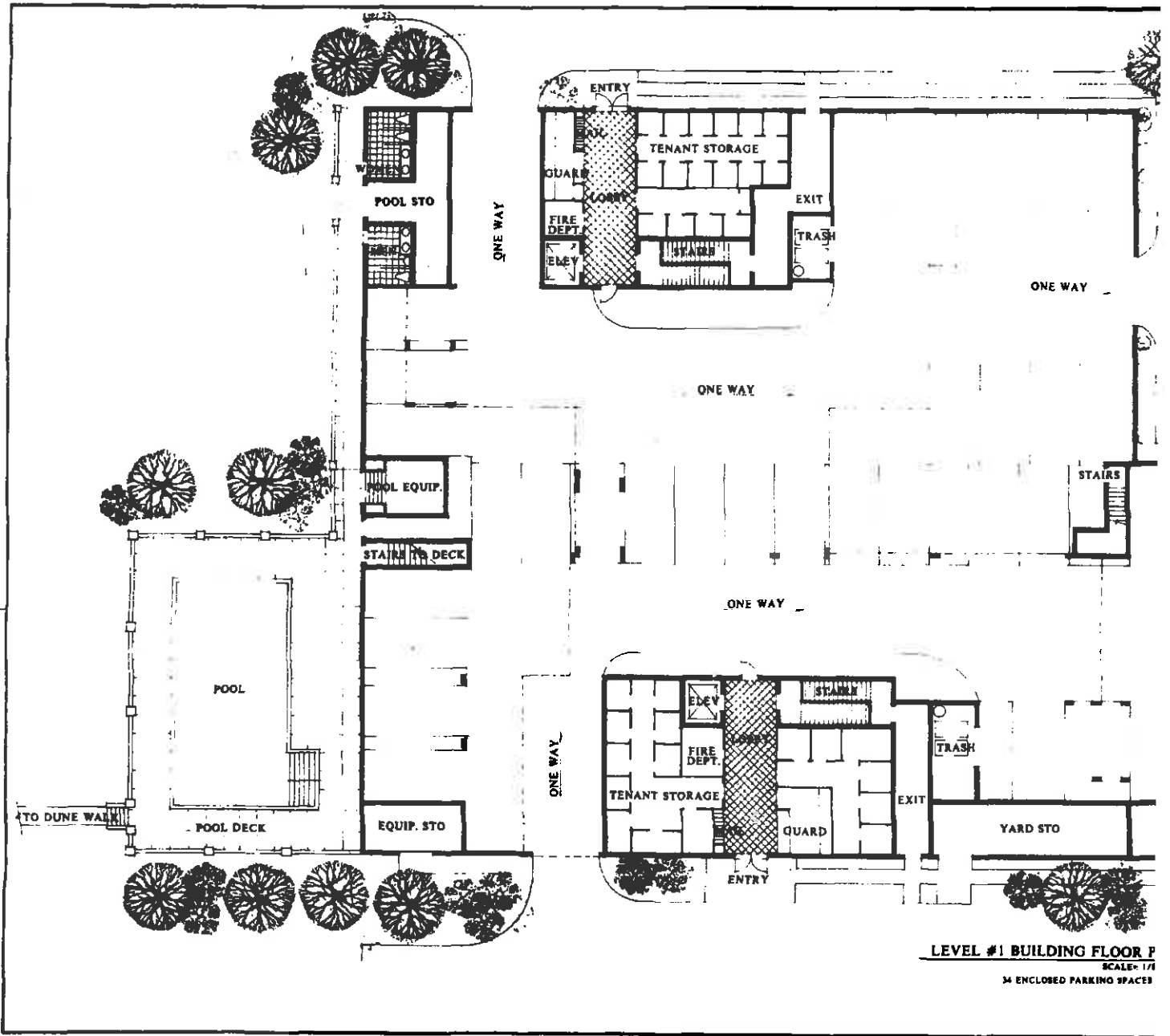


WALDORF  
CONDOMINIUM DEVELOPMENT  
Naples Florida

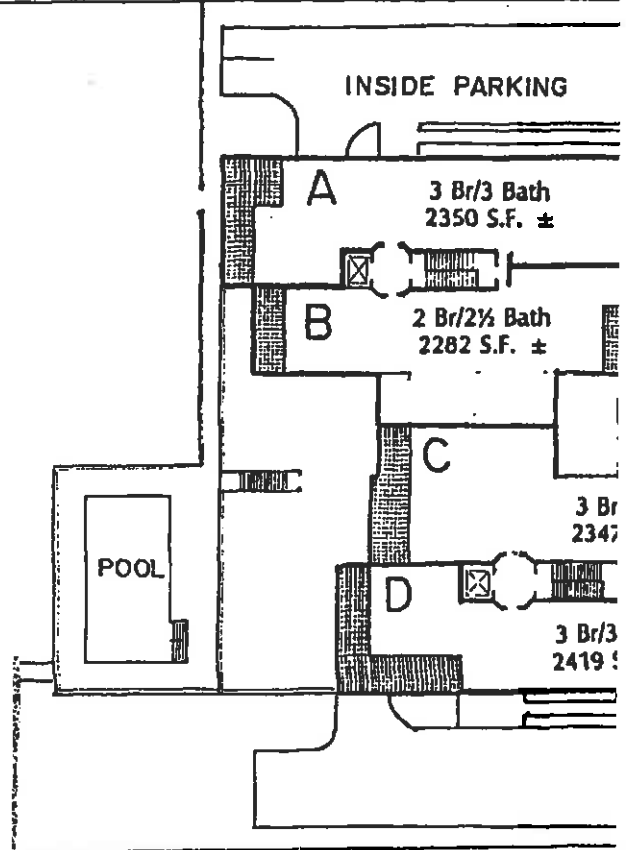
This brochure is for information purposes only. The artist's representations contained in this brochure were created to indicate the types of facilities and structures planned for The Waldorf and do not necessarily accurately depict the finished products.



**LEVEL #1 BUILDING FLOOR P**  
 SCALE: 1/4"  
 34 ENCLOSED PARKING SPACES

**THE WALDORF**  
**3377 GULF SHORE BLVD. NORTH**  
**ZONE 6**

**A SINGLE 8 STORY BUILDING WITH 2 RESIDENTIAL TOWERS A & B = NORTH TOWER**



**FOUR UNITS PER FLOOR**

- A: 1a, 2a, 3a, 4a, 5a, 6a, 7a PENTHOUSE: 8TH FL OF NORTH
- B: 1b, 2b, 3b, 4b, 5b, 6b, 7b
- C: 1c, 2c, 3c, 4c, 5c, 6c, 7c, 8c
- D: 1d, 2d, 3d, 4d, 5d, 6d, 7d, 8d